

Free Project
NOT FOR RESALE

QUILT 2

Wild Wild West



Featuring fabrics from the Wild Wild West collection by Art Loft for S·T·U·D·I·O fabrics

Fabric Requirements

(A) 5357P-38	2 panels	(J) Peppered Cotton-23*	2/3 yard
(B) Peppered Cotton-32	1/8 yard	(K) 5349-77	7/8 yard
(C) Peppered Cotton-50	1/4 yard	(L) Peppered Cotton-39	1 yard
(D) 5353-44	3/8 yard	(M) 5354-89	1-1/2 yards
(E) 5355-33	3/8 yard	(N) Peppered Cotton-46	2-1/3 yards
(F) 5348-99	3/8 yard	Backing 5353-44	5-1/3 yards
(G) 5352-38	1/2 yard		
(H) Peppered Cotton-78	5/8 yard		
(I) 5349-99	2/3 yard		

*Includes Binding

Additional Supplies Needed

- Air Lite batting: 80" x 93"
- Sewing and Quilting thread
- Sewing and Quilting supplies
- Quilt size: 72" x 84-1/2"
- Skill Level: Intermediate

Quilt designed by Denise Russell

Fabrics in the Collection



5356-99 Scenic Double Border - Black



5357P-38 Large Scenic Panel - Sienna



5347-38 Wild Horse Collage - Multi Sienna



5348-99 Rodeo Buckles
Black



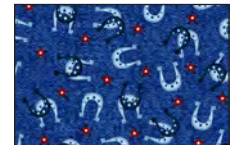
5349-77 Paisley Toss
Blue



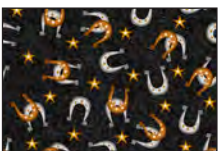
5349-88 Paisley Toss
Red



5349-99 Paisley Toss
Black



5350-11 Horseshoes
Blue



5350-99 Horseshoes
Black



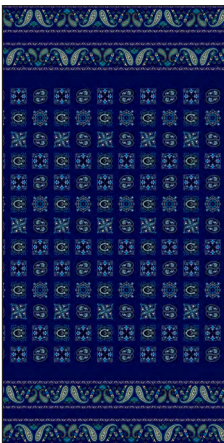
5352-38 Leather
Work - Sienna



5354-89 Serape
Blanket - Multi Red



5355-33 Cowboy
Accessories - Tan



5351-77 Bandana
Double Border - Blue



5351-88 Bandana
Double Border - Red



5353-44 Wild Horses - Desert

Selected fabrics from the
Peppered Cottons collection



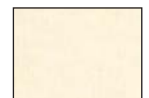
Carbon-23



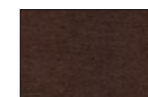
Paprika-32



Sand-39



Vanilla-46



Coffee
Bean-50



Lagoon-78

Cutting

Cutting Instructions

Please note: All strips are cut across the width of the fabric (WOF) from selvage to selvage unless otherwise noted. (WOF = Width of Fabric, LOF = Length of Fabric).

Fabric A (5357P-38 Large Scenic Panel - Sienna), trim:

*(3) 10-1/2" x 20-1/2" rectangles.

Fabric B (Peppered Cotton-32 Paprika), cut:

*(1) 2-1/8" x WOF strip. Sub-cut six 2-1/8" squares.

Fabric C (Peppered Cotton-50 Coffee Bean), cut:

*(2) 2-1/8" x WOF strips. Sub-cut twenty-four 2-1/8" squares.

Fabric D (5353-44 Wild Horses – Desert), cut:

*(3) 3-7/8" x WOF strips for rows 2 and 12.

Fabric E (5355-33 Cowboy Accessories – Tan), cut:

*(2) 5-1/2" x WOF strips. Sub-cut twenty-four 2-1/8" x 5-1/2" strips.

Fabric F (5348-99 Rodeo Buckles – Black), cut:

*(2) 4" x WOF strips. Sub-cut twelve 4" squares.

Fabric G (5352-38 Leather Work – Sienna), cut:

*(1) 3" x WOF strip. Sub-cut twelve 2-1/8" x 3" strips.

*(1) 3-3/8" x WOF strip. Sub-cut:

- Six 3-3/8" squares; cut once diagonally. (P)

- Twelve 1-3/4" squares.

*(1) 4-3/4" x WOF strip. Sub-cut twelve 2-1/8" x 4-3/4" strips.

Fabric H (Peppered Cotton-78 Lagoon), cut:

*(3) 2-1/4" x WOF strips. Sub-cut forty-eight 2-1/4" squares.

*(3) 1-1/2" x WOF strips for rows 5 and 9.

*(3) 2" x WOF strips for rows 6 and 8.

Fabric I (5349-99 Paisley Toss – Black), cut:

*(1) 3" x WOF strip. Sub-cut twelve 2-1/8" x 3" strips.

*(1) 3-3/8" x WOF strip. Sub-cut:

- Six 3-3/8" squares; cut once diagonally. (Q)

- Twelve 1-3/4" squares.

*(2) 3-3/4" x WOF strips. Sub-cut twenty-four 2-1/8" x 3-3/4" strips.

*(1) 4-3/4" x WOF strip. Sub-cut twelve 2-1/8" x 4-3/4" strips.

Fabric J (Peppered Cotton-23 Carbon), cut:

*(8) 2-1/2" x WOF strips for binding.

Sewing

Fabric K (5349-77 Paisley Toss – Blue), cut:

- * (2) 3-3/8" x WOF strips. Sub-cut twenty-four 3-3/8" squares; cut once diagonally. (R)
- * (3) 3-3/4" x WOF strips. Sub-cut twenty-four 3-3/4" squares; cut twice diagonally. (S)
- * (3) 2-1/2" x WOF strips for rows 4 and 10.

Fabric L (Peppered Cotton-39 Sand), cut:

- * (3) 3-3/4" x WOF strips. Sub-cut twenty-four 3-3/4" squares; cut twice diagonally. (T)
- * (3) 2-1/8" x WOF strips for rows 1 and 13.
- * (3) 1-1/2" x WOF strips for rows 3 and 11.
- * (2) 2" x WOF strips for row 7.

Fabric M (5354-89 Serape Blanket - Multi Red), fussy-cut:

- * (6) 5-1/2" x LOF strips for border 2.

Fabric N (Peppered Cotton-46 Vanilla), cut:

- * (8) 2-1/8" x WOF strips. Sub-cut 144 2-1/8" squares: **cut twenty-four squares** once diagonally. (U)
- * (2) 2-3/4" x WOF strips. Sub-cut twenty-four 2-1/8" x 2-3/4" strips.
- * (4) 3" x WOF strips. Sub-cut forty-eight 3" squares.
- * (2) 4-3/4" x WOF strips. Sub-cut twenty-four 2-1/2" x 4-3/4" strips.
- * (2) 5-1/2" x WOF strips. Sub-cut twenty-four 2-1/8" x 5-1/2" strips.
- * (2) 6-1/4" x WOF strips. Sub-cut twelve 6-1/4" squares; cut twice diagonally. (V)
- * (7) 1-1/2" x WOF strips for border 1.

Block Assembly

1. With right sides together, layer a Fabric L triangle T on the left short end of a Fabric K triangle R, stitch them together and press open. In the same manner, stitch another Fabric L triangle T to the opposite end of the triangle R (*figure 1*). Repeat to make a total of forty-eight flying-geese units.



Figure 1 – Make 48.

2. Fold a 3" Fabric N square in half with right sides together. Mark the center on adjacent sides of the square. Fold two Fabric K triangles S with wrong sides together and crease to mark the center. Nesting the centers, sew the triangles S to adjacent sides of the Fabric N square (*figure 2*). Press the seams open. Repeat to make forty-eight units.



Figure 2 – Make 48.

Sewing Cont.

3. Sew the step 1 and step 2 units together and press the seams toward square (*figure 3*).



Figure 3

4. Draw a diagonal line on the wrong side of the 2-1/4" Fabric H squares. With the right sides together, place one marked Fabric H square on a corner of one 4" Fabric F square and stitch on the drawn line. Repeat with the opposite corner of the same square. Trim the seam allowances to 1/4" and press open. Repeat with the other corners of the square (*figure 4*). Make twelve 4" patches.



Figure 4 – Make 12.

5. Sew two step 3 units to opposite sides of the step 4 units (*figure 5*). Press the seams away from the center. Repeat to make twelve strips.

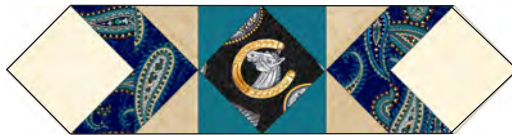


Figure 5 – Make 12.

6. Sew two Fabric N triangles V to opposite sides of the remaining step 3 units (*figure 6*). Press the seams toward triangles. Make a total of twenty-four units.



Figure 6 – Make 24.

7. Sew one step 6 unit to the top and one to the bottom of the step 5 strips to make twelve 10-1/2" blocks (*figure 7, next page*). Press the seams open and trim the blocks to size if necessary.

Sewing Cont.



Figure 7 – Make 12.

8. Noting stitching direction, sew one 2-1/8" Fabric C square to one short end of the 2-1/8" x 5-1/2" Fabric N strips. Repeat to make twelve strips of each type (*figure 8*). Press the seams toward the squares.



Figure 8 – Make 12 of each.

9. Repeat step 8 with the 2-1/8" x 3-3/4" Fabric I strips and twenty-four 2-1/8" Fabric N squares (*figure 9*).



Figure 9 – Make 12 of each.

10. Sew a 2-1/8" x 2-3/4" Fabric N strip to the step 9 units (*figure 10*). Press the seams toward the Fabric N strips.



Figure 10

11. Repeat step 8 with the 2-1/8" x 5-1/2" Fabric E strips and twenty-four 2-1/8" Fabric N squares (*figure 11*).



Figure 11 – Make 12 of each.

Sewing Cont.

12. Assemble the twelve 5-1/2" x 10-1/2" blocks by sewing together the steps 8-11 units as shown below (*figure 12*). Press the seams in one direction.



Figure 12 – Make 12.

13. Fold a 1-3/4" Fabric G square in half with the right sides together. Mark the center on adjacent sides of the square. Fold two Fabric N triangles U with wrong sides together and crease to mark the center. Nesting the centers, sew the triangles U to adjacent sides of the Fabric G square (*figure 13*). Press the seams open. Repeat to make twelve units.



Figure 13 – Make 12.

14. Sew a Fabric G triangle P to each step 13 unit (*figure 14*). Press the seams toward the triangle.



Figure 14

15. Repeat steps 13 and 14 with the 1-3/4" Fabric I squares, the remaining Fabric N triangles U, and the Fabric I triangles Q (*figure 15*).

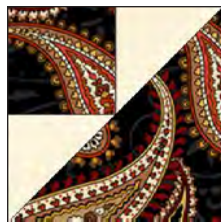


Figure 15

16. Noting the stitching direction, sew the 2-1/8" Fabric N squares to the 2-1/8" x 3" Fabric G strips. Press the seams toward the square. Repeat with the 2-1/8" Fabric N squares and the 2-1/8" x 3" Fabric I strips (*figure 16, next page*).

Sewing Cont.



Figure 16 – Make 12 of each.

17. Noting the stitching direction, sew the 2-1/8" Fabric N squares to the 2-1/8" x 4-3/4" Fabric G and Fabric I strips, making twelve units of each type (*figure 17*). Press the seams toward squares.



Figure 17 – Make 12 of each.

18. Matching the fabrics, sew together the steps 14, 15, 16, and 17 units to make 4-3/4" patches, as shown below (*figure 18*). Make twelve units of each type.



Unit W

Unit X

Figure 18 – Make 12 of each.

19. Sew a 2-1/8" x 4-3/4" Fabric N strip in between one unit W and one Unit X (*figure 19*). Press the seams toward the strip. Repeat to make twelve strips.



Figure 19 – Make 12

20. Sew a 2-1/8" Fabric B square in between two 2-1/8" x 4-3/4" Fabric N strips (*figure 20*). Press the seams toward strips. Repeat to make six units.



Figure 20 – Make 6.

Sewing Cont.

21. Noting fabric orientation, sew one step 19 strip to the top and one to the bottom of the step 20 units to make six 10-1/2" blocks. Press the seams toward the center and trim to size if necessary (*figure 21*).



Figure 21 - Make 6.

Quilt Top Assembly

(Follow the quilt diagram and photograph while assembling the quilt top which will be stitched in two sections – top and bottom.)

22. Sew together two strips with six step 12 blocks each to make the first (top section) and sixth (bottom section) block rows of the quilt. Press the seams open. The following strip and block rows will be added to these sections. However, please note the fabric orientation of the sixth block row and keep the row upside down as you add the other rows to it.

23. For the strip rows 1 and 13, join the three 2-1/8" Fabric L strips together end to end using diagonal seams. Cut two strips 60-1/2" long and stitch them to the step 22 rows. Press the seams toward the strip row.

24. Repeat step 23 with the three 3-7/8" Fabric D strips to make and add the strip rows 2 and 12 (note fabric orientation for row 12!).

25. Repeat step 23 with the three 1-1/2" Fabric L strips to make and add the strip rows 3 and 11.

26. Repeat step 23 with the three 2-1/2" Fabric K strips to make and add the strip rows 4 and 10.

27. Repeat step 23 with the three 1-1/2" Fabric H strips to make and add the strip rows 5 and 9.

28. For the second and fifth block rows, sew together two strips with six step 7 blocks each. Sew one row to the top and one to the bottom section.

29. Repeat step 23 with the three 2" Fabric H strips to make and add the strip rows 6 and 8.

30. For the third block row, stitch together two step 21 blocks, a 10-1/2" x 20-1/2" Fabric A rectangle, and two more step 21 blocks. Press the seams in one direction. Sew this row to the top section of the quilt center.

31. For the strip row 7, join the two 2" Fabric L strips together end to end using diagonal seams. Cut one strip 60-1/2" long and stitch it to the bottom of the top section.

Sewing Cont.

32. For the fourth block row, stitch together one 10-1/2" x 20-1/2" Fabric A rectangle, two step 21 blocks, and another 10-1/2" x 20-1/2" Fabric A rectangle. Press the seams in one direction. Sew this row to the **top** section of the quilt center.

33. Noting fabric orientation, join the top and the bottom sections to make the quilt center.

34. For border 1, sew the seven 1-1/2" Fabric N strips together end to end using diagonal seams. Measure the vertical length of the quilt top through the center and cut two border strips that length. Sew one strip to each side of the quilt top. Measure the width of the quilt top through the center. Cut two border strips that length and sew one to the top and one to the bottom. Press the seams toward the borders.

35. Repeat step 34 with the six 5-1/2" Fabric M strips to make and add border 2, but use straight seams when joining the strips.

Layering, Quilting, and Finishing

36. Create a quilt sandwich with the batting between the quilt top and the backing. Pin or baste layers together, mark quilting design, and quilt by hand or machine. When quilting is complete, remove pins or basting and trim batting and backing even with raw edges of the quilt top.

Binding

37. Join the eight 2-1/2" Fabric J binding strips together end to end using a diagonal seam to make one long strip. Fold in half lengthwise and press. Sew binding to the edges of the quilt top, mitering corners, and overlapping ends. Fold binding to the back of the quilt and stitch it in place by hand to finish.



©2020 Studio e Fabrics®

Every effort has been made to ensure that all projects are error free. All the information is presented in good faith; however, no warranty can be given nor results guaranteed as we have no control over the execution of instructions. Therefore, we assume no responsibility for the use of this information or damages that may occur as a result. When errors are brought to our attention, we make every effort to correct and post a revision as soon as possible. Please make sure to check www.studioefabrics.com for pattern updates prior to starting the project. We also recommend that you test the project prior to cutting for kits. Finally, all free projects are intended to remain free to you and are not for resale.

Diagram

