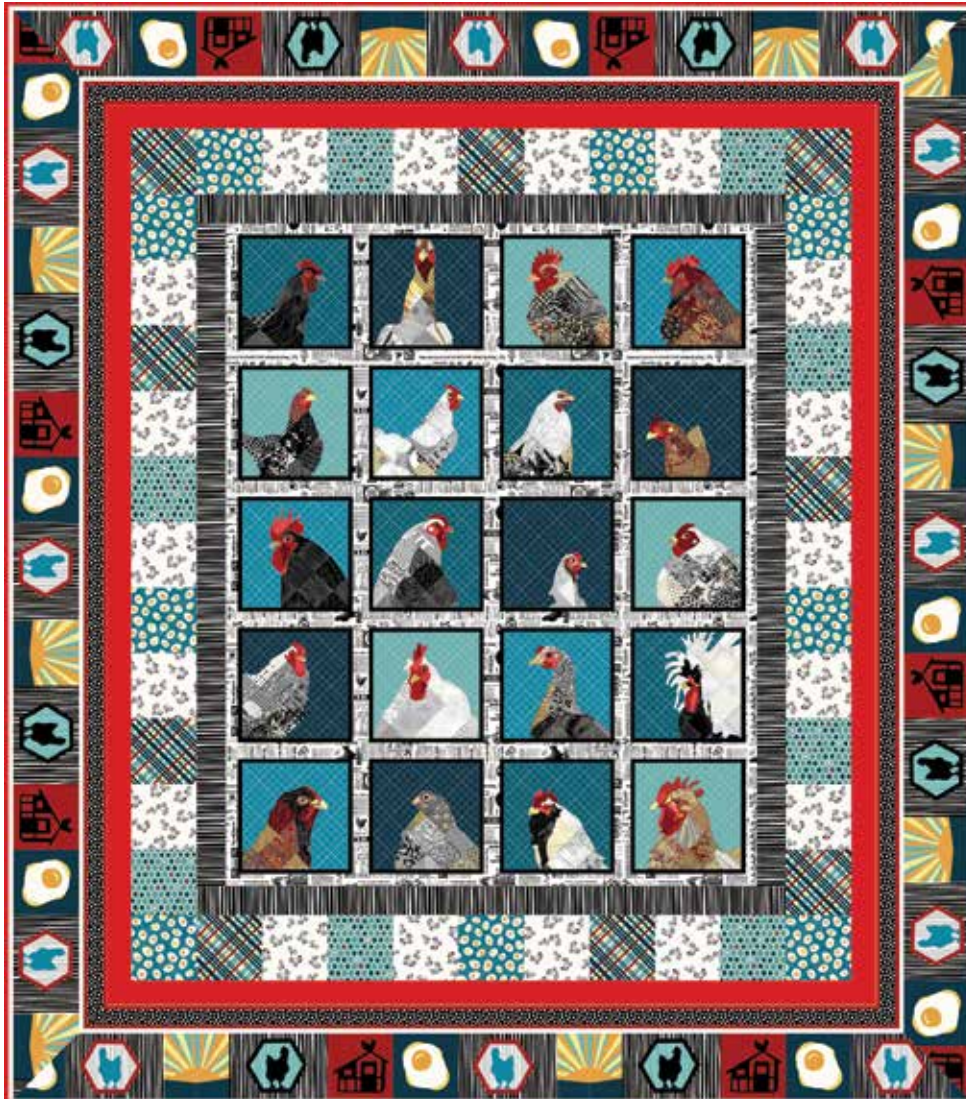


Zooming Chickens

• A Free Project Sheet •
• NOT FOR RESALE •

QUILT 1



Featuring fabrics from the **Zooming Chickens** collection by **Timna Tarr** for **STUDIO e fabrics**

Fabric Requirements

(A) 7198P-78	1 panel	(H) 7197-78	2-1/8 yards
(B) 7188-39	1/2 yard	Backing	
(C) 7191-78	1/4 yards	7186-78	3-3/4 yards
(D) 7192-71	1/4 yard		
(E) 7196-39	3/8 yard		
(F) 7193-17	1/4 yard	* Includes Binding	
(G) Flame-16**.....	1 yard*	** Peppered Cottons Collection	

Additional Supplies Needed

Batting 67" x 75" (Recommended:
Air Lite® Colour Me 100% Cotton)
Piecing and sewing thread
Quilting and sewing supplies

Quilt designed by Heidi Pridemore
Finished Quilt Size 59" x 67"
Skill Level: Advanced Beginner

Please check our website for pattern updates before starting this project.

Fabrics in the Collection



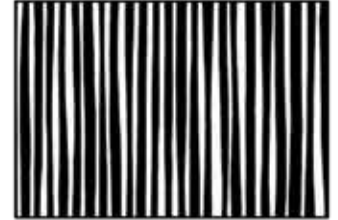
4-Inch Blocks
Teal-Red - 7185-78



Tossed Feathers
Teal-Red - 7186-78



Newsprint
Off-White - 7187-39



Irregular Stripe
Off-White - 7188-39



Ombre Dot
Teal - 7189-76



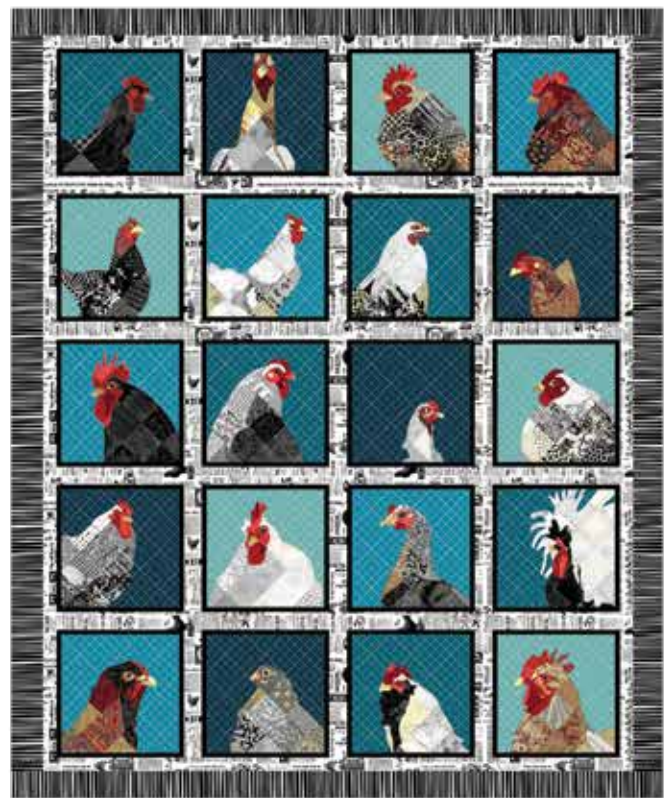
Diagonal Words
Off-White - 7190-39



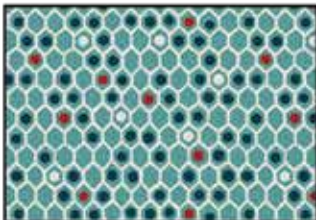
Diagonal Plaid
Teal-Red - 7191-78



Eggs
Blue Teal - 7192-71



36-Inch Panel
Teal-Red - 7198P-78



Egg-Carton Geo
Light Teal - 7193-17



Stitched Feathers
Off-White - 7194-39



Hen Scratches
Charcoal - 7195-91



Outline Chickens
Off-White - 7196-39



Border Stripe
Teal-Red - 7197-78

Select Fabrics from Peppered Cottons



Deep Space
Deep Space-98



Flame
Flame-16



White Sugar
White Sugar-09

Cutting

Cutting Instructions

Please note: All strips are cut across the width of fabric (WOF) from selvage to selvage edge unless otherwise noted.

WOF= Width of Fabric • LOF = Length of Fabric

Fabric A (7198P-78 36-Inch Panel – Teal-Red):

- Fussy cut (1) 33" x 41" rectangle, centered on the panel.

Fabric B (7188-39 Irregular Stripe – Off-White), cut:

- (2) 2 $\frac{3}{4}$ " x 41" WOF strips.
- (2) 2 $\frac{3}{4}$ " x 37 $\frac{1}{2}$ " WOF strips.

Fabric C (7191-78 Diagonal Plaid – Teal - Red), cut:

- (1) 4 $\frac{1}{2}$ " x WOF strip, sub-cut (9) 4 $\frac{1}{2}$ " squares.

Fabric D (7192-71 Eggs – Blue Teal), cut:

- (1) 4 $\frac{1}{2}$ " x WOF strip, sub-cut (9) 4 $\frac{1}{2}$ " squares.

Fabric E (7196-39 Outline Chickens – Off-White), cut:

- (2) 4 $\frac{1}{2}$ " x WOF strips, sub-cut (18) 4 $\frac{1}{2}$ " squares.

Fabric F (7193-17 Egg-Carton Geo – Light Teal), cut:

- (1) 4 $\frac{1}{2}$ " x WOF strip, sub-cut (8) 4 $\frac{1}{2}$ " squares.

Fabric G (Flame-16 Peppered Cottons – Flame), cut:

- (3) 2" x WOF strips. Sew the strips together end to end with diagonal seams and cut (2) 2" x 52 $\frac{1}{2}$ " strips.
- (3) 2" x WOF strips. Sew the strips together end to end with diagonal seams and cut (2) 2" x 47 $\frac{1}{2}$ " strips.
- (7) 2 $\frac{1}{2}$ " x WOF strips for the binding.

Fabric H (7197-78 Border Stripe – Teal-Red), cut:

- (2) 6 $\frac{1}{2}$ " x 71" LOF strips,
- (2) 6 $\frac{1}{2}$ " x 63" LOF strips.

Backing (7186-78 Tossed Feathers – Teal-Red), cut:

- (2) 67" x WOF strips. Sew the strips together and trim to 67" x 75" to make the back.

Sewing

Sew using a ¼" seam allowance with right sides together (RST) unless otherwise indicated. Always press towards the darker fabric while assembling, unless otherwise noted by the arrows.

Block Assembly

Note: The arrows in figures represent the fabric print direction. Pay attention to the fabric and unit orientations when assembling the various components.

1. Sew (1) 2 ¾" x 41" Fabric B strip to each side of the 33" x 41" Fabric A rectangle. Sew (1) 2 ¾" x 37 ½" Fabric B strip to the top and to the bottom of the Fabric A rectangle to make the Center Block (Fig. 1). **Trim the block to measure 36 ½" x 44 ½"**.

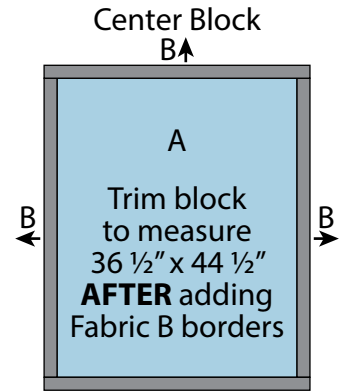


Fig. 1

2. Follow Figure 2 and sew together (2) 4 ½" Fabric D squares, (5) 4 ½" Fabric E squares, (2) 4 ½" Fabric C squares and (2) 4 ½" Fabric F square to make the Left Side Border.

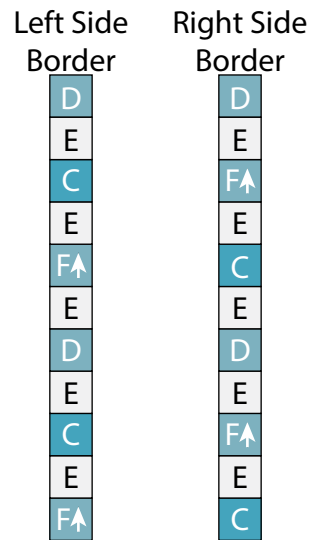


Fig. 2

Fig. 3

4. Follow Figure 4 and sew together (3) 4 ½" Fabric C squares, (2) 4 ½" Fabric D squares, (4) 4 ½" Fabric E squares and (2) 4 ½" Fabric F squares to make the Top Border.



Fig. 4

5. Follow Figure 5 and sew together (3) 4 ½" Fabric D squares, (2) 4 ½" Fabric C squares, (4) 4 ½" Fabric E squares and (2) 4 ½" Fabric F squares to make the Bottom Border.

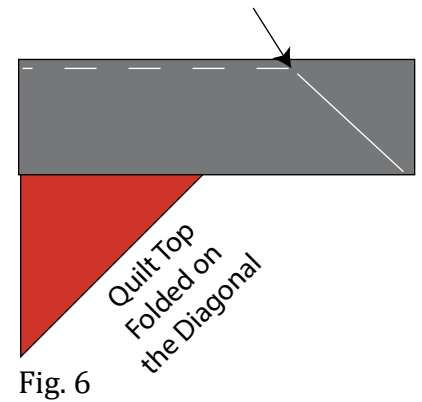


Fig. 5

Quilt Top Assembly

(Follow the Quilt Layout while assembling the quilt top.)

- Sew the Left Side Border and the Right Side Border to the left and right sides of the Center Block.
- Sew the Top Border and the Bottom Border to the top and to the bottom of the Center Block.
- Sew (1) 2" x 52 1/2" Fabric G strip to each side of the Center Block. Sew (1) 2" x 47 1/2" Fabric G strip to the top and to the bottom of the Center Block.
- Center (1) 6 1/2" x 71" Fabric H strip on (1) side of the Center Block and pin in place. Start sewing the strip a 1/4" from the top edge of the block and stop a 1/4" from the bottom edge. **DO NOT TRIM THE EXCESS.** Repeat with the opposite side.
- Repeat Step 9 to sew (1) 6 1/2" x 63" Fabric H strip to the top and to the bottom of the Center Block, making sure to stop and start 1/4" away from each end of the block. To miter each corner, fold the Center Block on a diagonal, wrong side together. This should line up the strips from adjacent sides (Fig. 6).
- Starting at the sewn seam (represented by the arrow in Figure 6), draw a 45-degree line to the edge of the fabric. Sew on the drawn line. Trim the excess fabric leaving a 1/4" seam. Repeat this step with the remaining corners to make the quilt top.

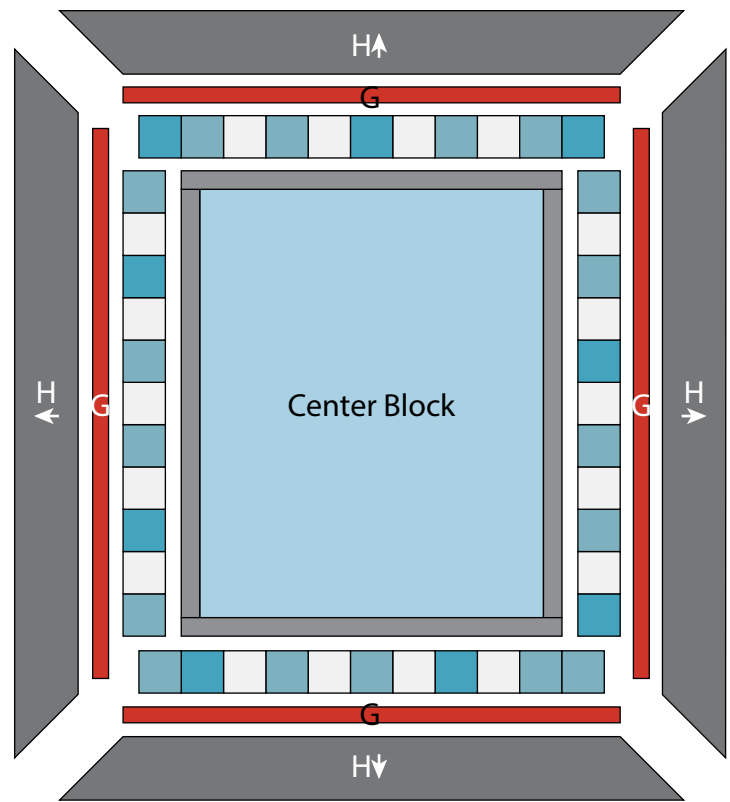


Layering, Quilting and Finishing

- Press the quilt top and 67" x 75" backing well. Layer backing (wrong side up), batting, pressed quilt top (right side up) and baste. Quilt as desired and trim excess batting and backing when quilting is complete.

Binding

- Cut the ends of the (7) Fabric G binding strips at a 45-degree angle and sew end to end to make (1) continuous piece of binding. Fold in half lengthwise and press wrong sides together.
- Sew the binding to the front of the quilt, raw edges together. Turn the folded edge to the back, and hand stitch in place.



Quilt Layout

*Every effort has been made to ensure that all projects are error free. All the information is presented in good faith, however no warranty can be given nor results guaranteed as we have no control over the execution of instructions. Therefore, we assume no responsibility for the use of this information or damages that may occur as a result. When errors are brought to our attention, we make every effort to correct and post a revision as soon as possible. Please make sure to check www.studioefabrics.net for pattern updates prior to starting the project. We also recommend that you test the project prior to cutting for kits. Finally, all free projects are intended to remain free to you and are **not for resale**.*