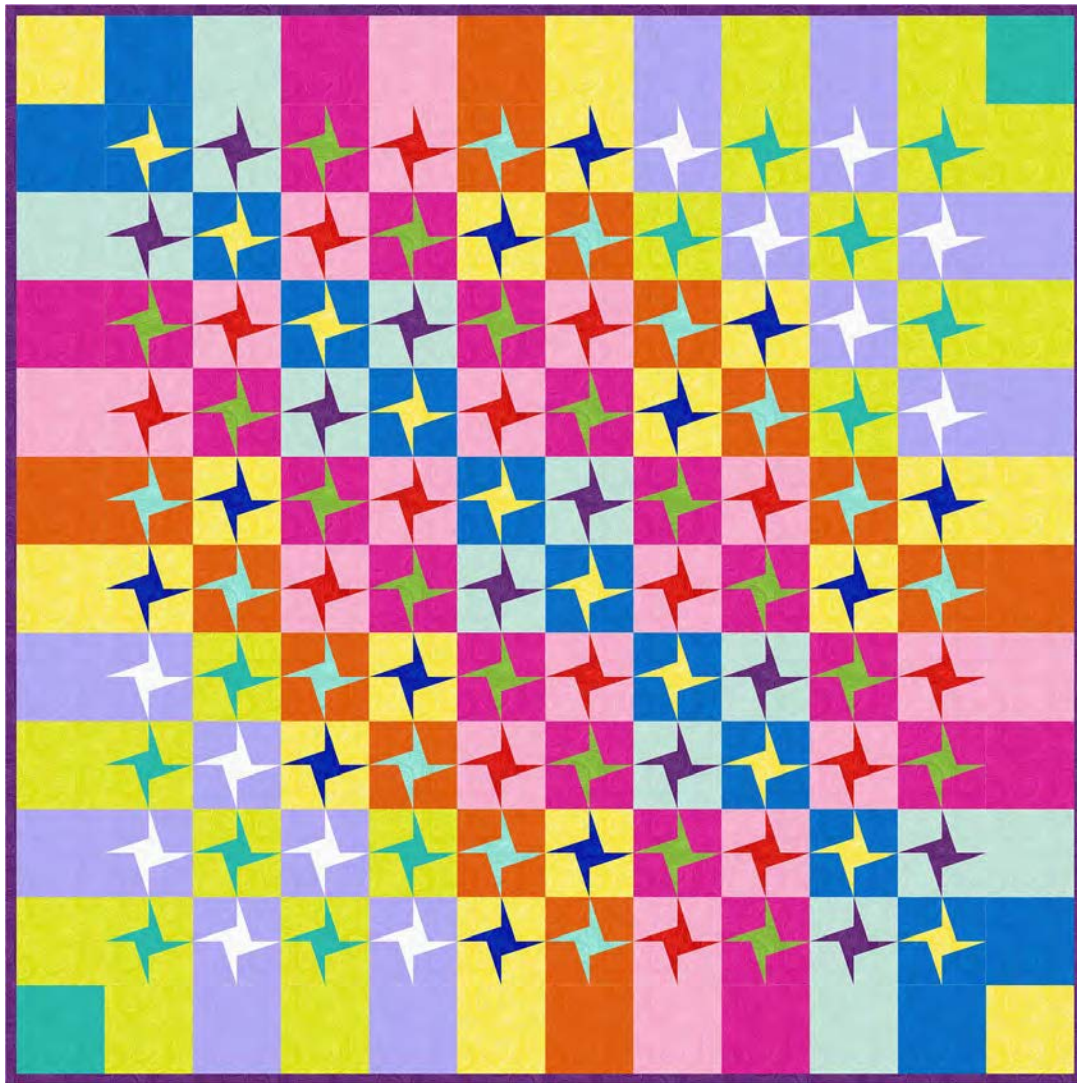


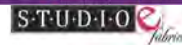
Free Project  
NOT FOR RESALE

QUILT 1

# Just Color!



Featuring fabrics from the **Just Color!** collection from



**Fabric Requirements**

- (A) 1351-Lt. Teal 1/3 yard
- (B) 1351-Royal 1/3 yard
- (C) 1351-Pigment White 1/3 yard
- (D) 1351-Grass 1/3 yard
- (E) 1351-Red 1/3 yard
- (F) 1351-Teal 3/8 yard
- (G) 1351-Aegean Blue 1/2 yard
- (H) 1351-Robin's Egg 1/2 yard

- (I) 1351-Orange 1/2 yard
- (J) 1351-Orchid 1/2 yard
- (K) 1351-Citrus 1/2 yard
- (L) 1351-Grape\* 5/8 yard
- (M) 1351-Lipstick 5/8 yard
- (N) 1351-Carnation 5/8 yard
- (O) 1351-Sunshine 5/8 yard
- Backing 1351-Chalk 3-1/4 yards
- \*Includes Binding

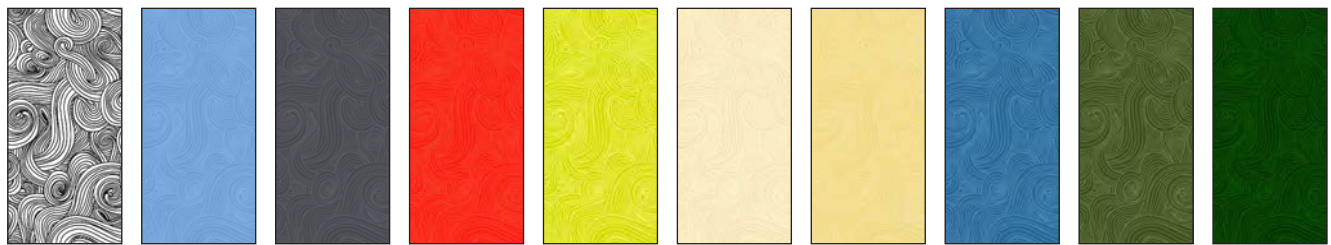
**Additional Supplies Needed**

- Batting: 56" x 56"
- Sewing and Quilting thread
- Sewing and Quilting supplies
- Quilt size: 48" x 48"
- Skill Level: Advanced Beginner
- Quilt designed by Denise Russell

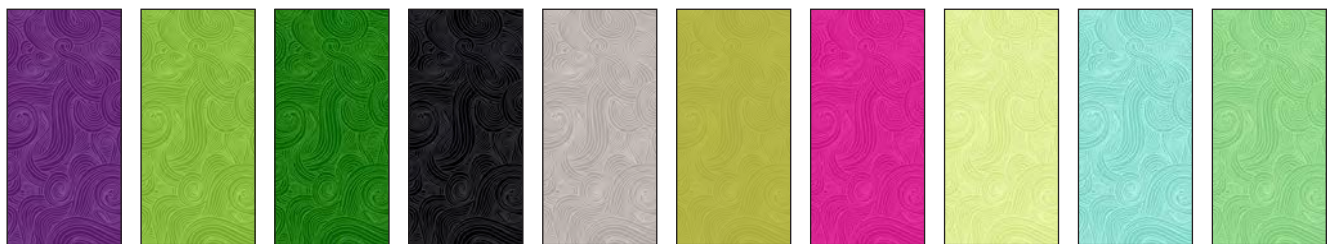
## Fabrics in the Collection



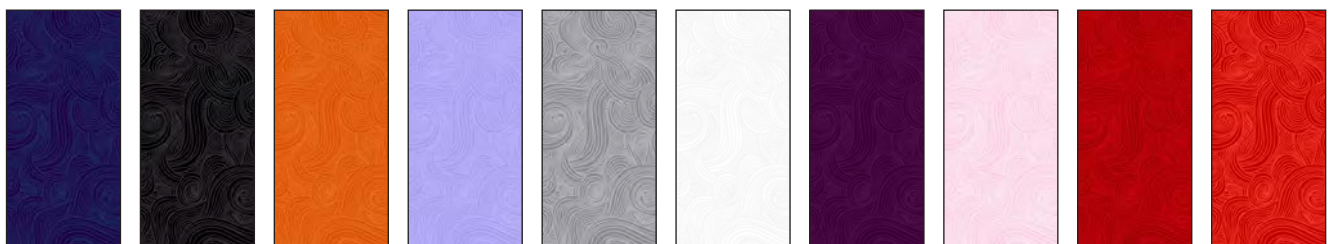
1351 Aegean Blue  
1351 Amaryllis  
1351 Aqua  
1351 Black-board  
1351 Blush  
1351 Brown  
1351 Burgundy  
1351 Butterscotch  
1351 Camel  
1351 Carnation



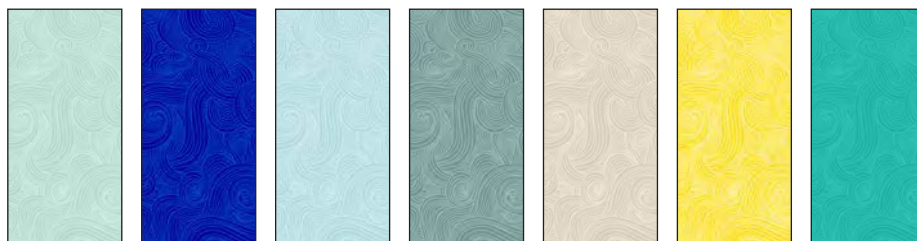
1351 Chalk  
1351 Chambray  
1351 Charcoal  
1351 Chili  
1351 Citrus  
1351 Cream  
1351 Daffodil  
1351 Denim  
1351 Emerald  
1351 Forest



1351 Grape  
1351 Grass  
1351 Green  
1351 Iron  
1351 Lava  
1351 Lime  
1351 Lipstick  
1351 Lt. Lime  
1351 Lt. Teal  
1351 Mint



1351 Navy  
1351 Onyx  
1351 Orange  
1351 Orchid  
1351 Pewter  
1351 Pigment White  
1351 Plum  
1351 Powder Pink  
1351 Red Delicious  
1351 Red



1351 Robin's Egg  
1351 Royal  
1351 Sea Glass  
1351 Slate  
1351 Stone  
1351 Sunshine  
1351 Teal



# Cutting

## Cutting Instructions

*Please note: All strips are cut across the width of the fabric (WOF) from selvage to selvage unless otherwise noted.  
(WOF = Width of Fabric, LOF = Length of Fabric)*

### **Fabric A (1351-Lt. Teal), cut:**

\*(2) 2-3/4" x WOF strips. Sub-cut (48) 1-3/4" x 2-3/4" strips. (B3)

### **Fabric B (1351-Royal), cut:**

\*(2) 2-3/4" x WOF strips. Sub-cut (48) 1-3/4" x 2-3/4" strips. (B3)

### **Fabric C (1351-Pigment White), cut:**

\*(2) 2-3/4" x WOF strips. Sub-cut (48) 1-3/4" x 2-3/4" strips. (B2)

### **Fabric D (1351-Grass), cut:**

\*(3) 2-3/4" x WOF strips. Sub-cut (64) 1-3/4" x 2-3/4" strips. (B4)

### **Fabric E (1351-Red), cut:**

\*(3) 2-3/4" x WOF strips. Sub-cut (64) 1-3/4" x 2-3/4" strips. (B4)

### **Fabric F (1351-Teal), cut:**

\*(2) 2-3/4" x WOF strips. Sub-cut (48) 1-3/4" x 2-3/4" strips. (B2)

\*(1) 4-1/2" x WOF strip. Sub-cut (2) 4-1/2" squares.

### **Fabric G (1351-Aegean Blue), cut:**

\*(3) 2-1/2" x WOF strips. Sub-cut (40) 2-1/2" squares. (B1)

\*(1) 4-1/2" x WOF strip. Sub-cut (4) 4-1/2" squares.

### **Fabric H (1351-Robin's Egg), cut:**

\*(3) 2-1/2" x WOF strips. Sub-cut (40) 2-1/2" squares. (B1)

\*(1) 4-1/2" x WOF strip. Sub-cut (4) 4-1/2" squares.

### **Fabric I (1351-Orange), cut:**

\*(3) 2-1/2" x WOF strips. Sub-cut (48) 2-1/2" squares. (B3)

\*(1) 4-1/2" x WOF strip. Sub-cut (4) 4-1/2" squares.

### **Fabric J (1351-Orchid), cut:**

\*(3) 2-1/2" x WOF strips. Sub-cut (48) 2-1/2" squares. (B2)

\*(1) 4-1/2" x WOF strip. Sub-cut (8) 4-1/2" squares.

### **Fabric K (1351-Citrus), cut:**

\*(3) 2-1/2" x WOF strips. Sub-cut (48) 2-1/2" squares. (B2)

\*(1) 4-1/2" x WOF strip. Sub-cut (8) 4-1/2" squares.

### **Fabric L (1351-Grape), cut:**

\*(2) 2-3/4" x WOF strips. Sub-cut (40) 1-3/4" x 2-3/4" strips. (B1)

\*(5) 2-1/2" x WOF strips for binding.

## Sewing

*Measurements include ¼" seam allowances. Sew with right sides together unless otherwise stated. If no direction is specified, press seam toward darker fabric.*

### Fabric M (1351-Lipstick), cut:

\* (4) 2-1/2" x WOF strips. Sub-cut (64) 2-1/2" squares. (B4)

\* (1) 4-1/2" x WOF strip. Sub-cut (4) 4-1/2" squares.

### Fabric N (1351-Carnation), cut:

\* (4) 2-1/2" x WOF strips. Sub-cut (64) 2-1/2" squares. (B4)

\* (1) 4-1/2" x WOF strip. Sub-cut (4) 4-1/2" squares.

### Fabric O (1351-Sunshine), cut:

\* (3) 2-1/2" x WOF strips. Sub-cut (48) 2-1/2" squares. (B3)

\* (2) 2-3/4" x WOF strips. Sub-cut (40) 1-3/4" x 2-3/4" strips. (B1)

\* (1) 4-1/2" x WOF strip. Sub-cut (6) 4-1/2" squares.

### Block Assembly

Note: Please refer to Table 1 for the fabric combination for each block. Group fabric pieces by block.

	Fabric	(Quantity) Size of patches
<b>Block 1</b> Make 5	G-Aegean Blue H-Robin's Egg O-Sunshine L-Grape	(40) 2-1/2" squares (40) 2-1/2" squares (40) 1-3/4" x 2-3/4" strips (40) 1-3/4" x 2-3/4" strips
<b>Block 2</b> Make 6	J-Orchid K-Citrus C-Pigment White F-Teal	(48) 2-1/2" squares (48) 2-1/2" squares (48) 1-3/4" x 2-3/4" strips (48) 1-3/4" x 2-3/4" strips
<b>Block 3</b> Make 6	I-Orange O-Sunshine A-Lt. Teal B-Royal	(48) 2-1/2" squares (48) 2-1/2" squares (48) 1-3/4" x 2-3/4" strips (48) 1-3/4" x 2-3/4" strips
<b>Block 4</b> Make 8	M-Lipstick N-Carnation D-Grass E-Red	(64) 2-1/2" squares (64) 2-1/2" squares (64) 1-3/4" x 2-3/4" strips (64) 1-3/4" x 2-3/4" strips

Table 1. Fabric combination per block.

### Block 1

1. On the right side, mark one edge of the 2-1/2" Fabric G and Fabric H squares 1-1/2" from the corner. On the wrong side, draw a line 1/4" in from one of the long sides of each 1-3/4" x 2-3/4" Fabric O and Fabric L strips (*figure 1*, next page).

## Sewing Cont.

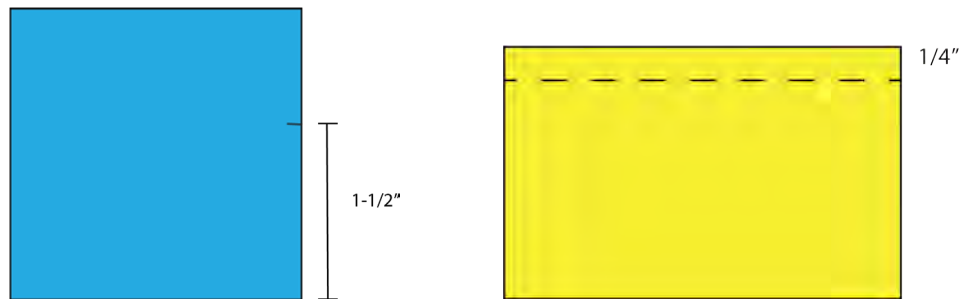


Figure 1

2. Sew the 1-3/4" x 2-3/4" Fabric O strips to the 2-1/2" Fabric G squares as shown below. Press open and trim the square to 2-1/2". Repeat with the remaining strips and squares. Noting fabric orientation, sew the units two by two and press the seams in one direction. Sew the strips into ten 4-1/2" 4-patches (*figure 2*). Press the seams in one direction.

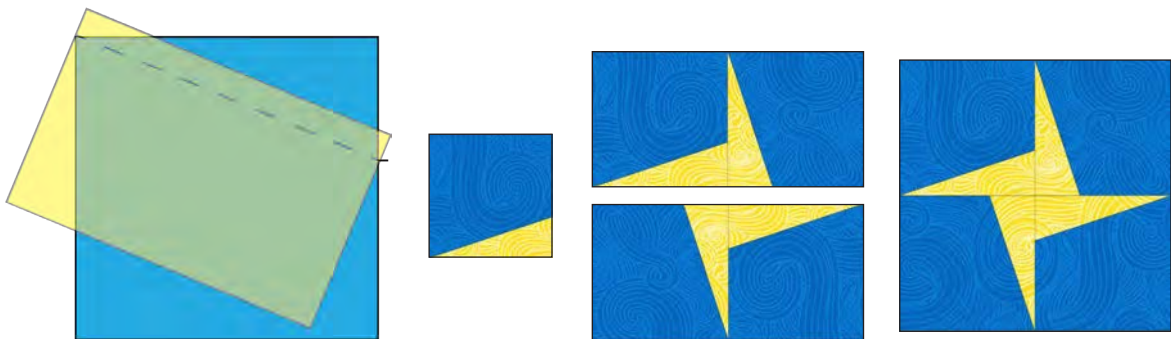


Figure 2 – Make 10.

3. Repeat step 2 with the 1-3/4" x 2-3/4" Fabric L strips and the 2-1/2" Fabric H squares (*figure 3*) to make ten 4-1/2" squares.

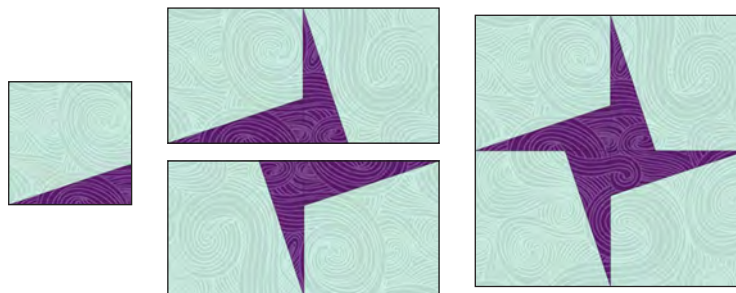


Figure 3 – Make 10.

4. Sew together the step 2 and 3 units to make five 8-1/2" blocks (*figure 4*, next page). Press the seams in one direction.

## Sewing Cont.

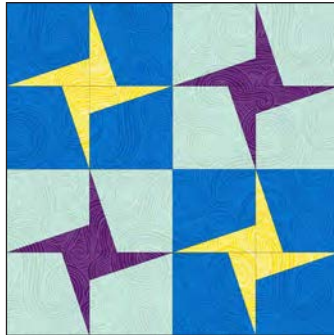
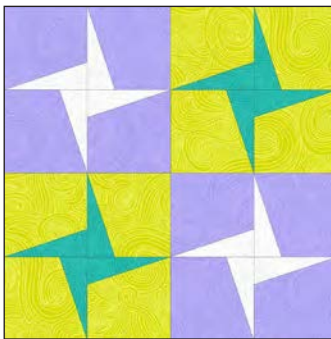
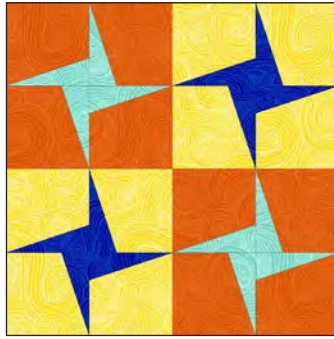


Figure 4 – Make 5.

5. Repeat steps 1 – 4 to make the other blocks (*figure 5*).

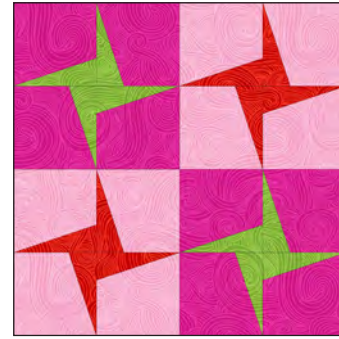


Make 6



Make 6

Figure 5



Make 8.

### Quilt Top Assembly

*(Follow the quilt diagram and photograph while assembling the quilt top.)*

6. Following the quilt photo for block placement, lay out five rows of five blocks each. Sew the blocks together in each row, then sew the rows together in order, matching adjacent seams.

7. Referring to the quilt photo for fabric placement, arrange ten 4-1/2" squares for each side of the quilt. Sew squares together and sew one border strip to each side of the quilt center. Press the seam toward quilt center.

8. Repeat step 7 with the remaining 4-1/2" squares and sew one border strip to the top and one to the bottom of the quilt center.

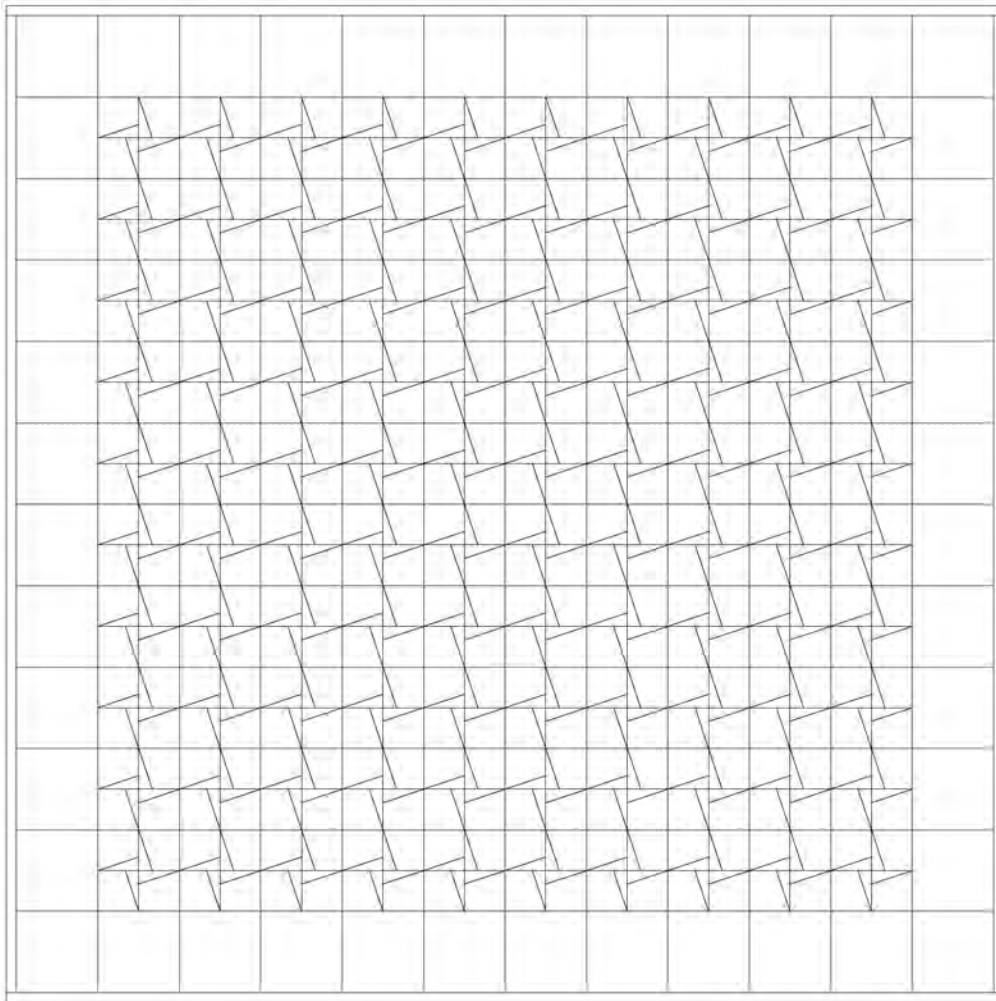
### Layering, Quilting, and Finishing

9. Create a quilt sandwich with the batting between the quilt top and the backing. Pin or baste layers together, mark quilting design, and quilt by hand or machine. When quilting is complete, remove pins or basting, and trim batting and backing even with raw edges of the quilt top.

### Binding

11. Join the five 2-1/2" Fabric L binding strips together end to end using a diagonal seam to make one long strip. Fold in half lengthwise and press. Sew binding to the edges of the quilt top, mitering corners, and overlapping ends. Fold binding to the back of the quilt and stitch it in place by hand to finish.

# Sewing Cont.



Quilt Diagram

©2019 Studio e Fabrics®

*Every effort has been made to ensure that all projects are error free. All the information is presented in good faith; however, no warranty can be given nor results guaranteed as we have no control over the execution of instructions. Therefore, we assume no responsibility for the use of this information or damages that may occur as a result. When errors are brought to our attention, we make every effort to correct and post a revision as soon as possible. Please make sure to check [www.studioefabrics.com](http://www.studioefabrics.com) for pattern updates prior to starting the project. We also recommend that you test the project prior to cutting for kits. Finally, all free projects are intended to remain free to you and are not for resale.*