

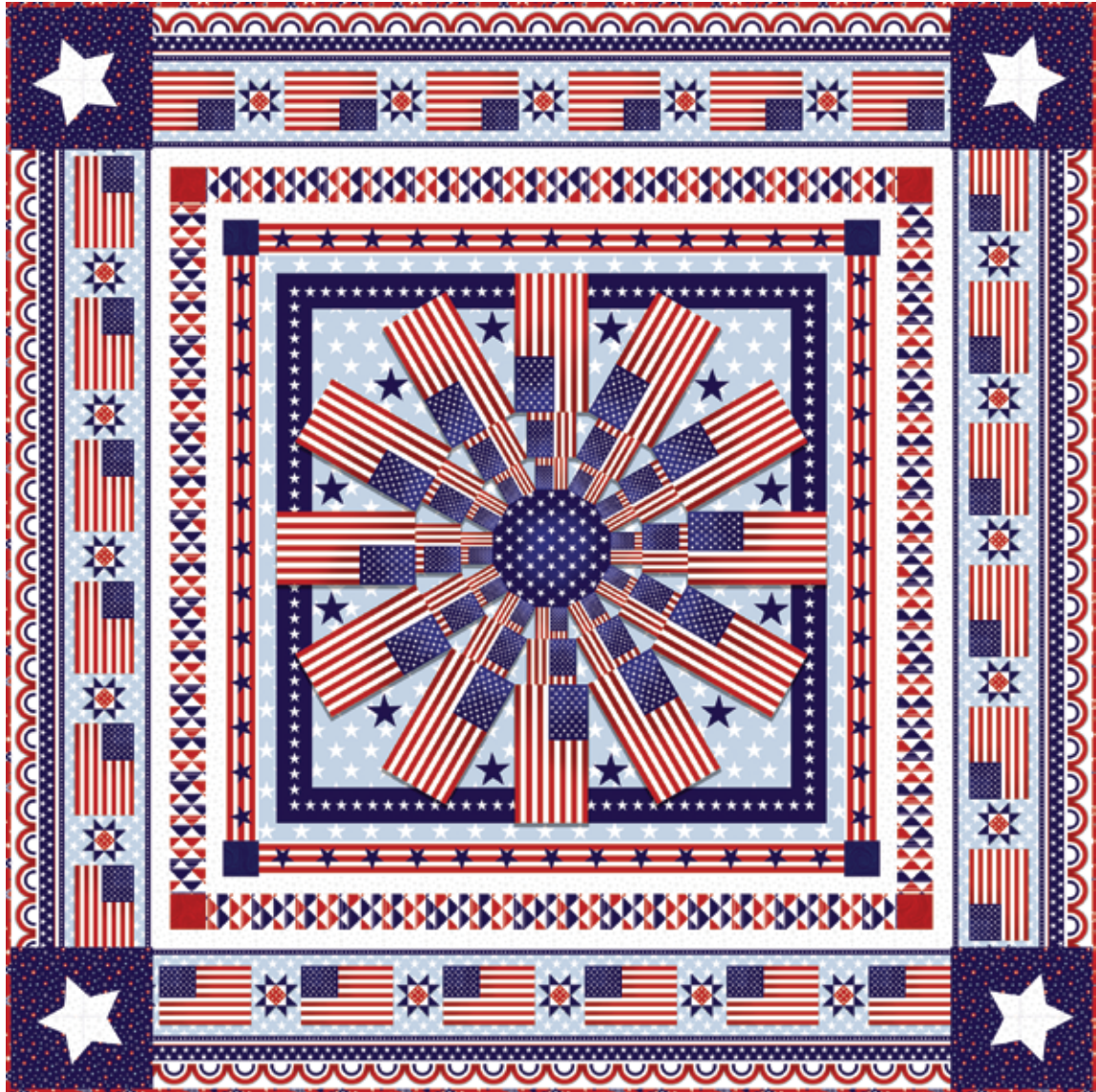


www.studiofabrics.net

American Style

QUILT 1

• A Free Project Sheet •
• NOT FOR RESALE •



Featuring fabrics from the **American Style** collection by **Chelsea DesignWorks** for **STUDIO·e·fabrics**

Fabric Requirements

- | | | | |
|--------------------------|-------------|-------------------|-----------|
| (A) 5497P-78 | 1 panel | (H) 5493-88 | 2/3 yard* |
| (B) 1351-Navy** | 1/8 yard | Backing | |
| (C) 5496-1W | 3/4 yard | 5494-78 | 4 yards |
| (D) 5495-78 | 3/8 yard | | |
| (E) 1351-Red Delicious** | 1/8 yard | | |
| (F) 5492-78 | 1 3/8 yards | | |
| (G) 5496-77 | 1/3 yard | | |

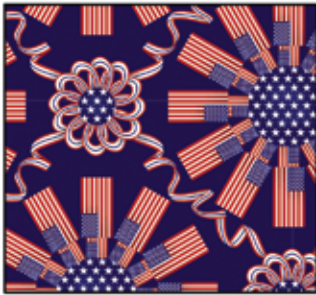
* Includes Binding
** Just Color! Collection

Additional Supplies Needed

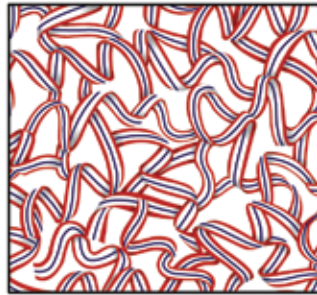
- Batting 69" x 69" (Recommended: Air Lite® Colour Me 100% Cotton)
- Piecing and sewing thread
- Quilting and sewing supplies
- Quilt designed by Megan Downer
- Finished Quilt Size 61" x 61"
- Skill Level: Advanced Beginner

Please check our website for pattern updates before starting this project.

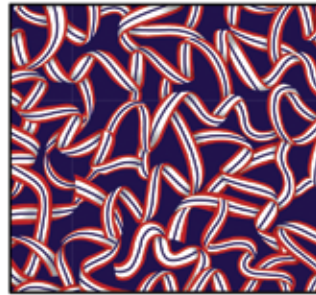
Fabrics in the Collection



Medallion - Patriotic
5490-78



Ribbon - White
5491-1



Ribbon - Dark Blue
5491-77



Border Stripe - Patriotic
5492-78



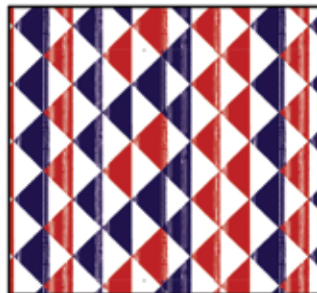
Large Stars - Light Blue
5493-11



Large Stars - Red
5493-88



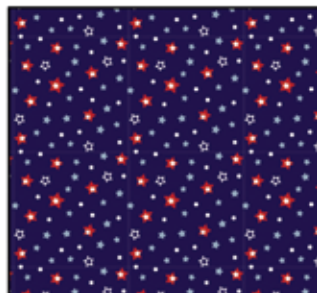
Flag Collage - Patriotic
5494-78



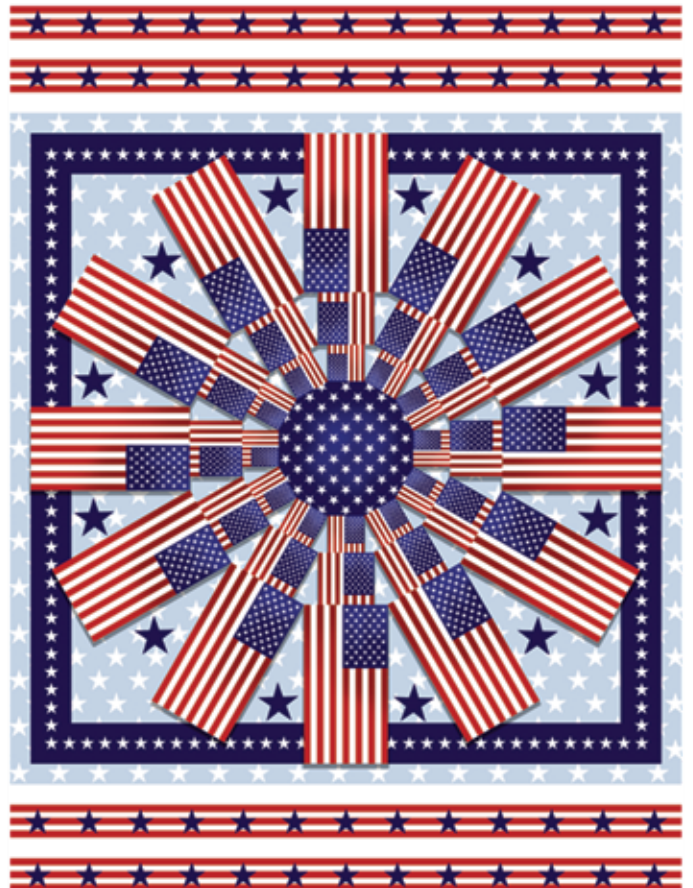
Triangles - Patriotic
5495-78



Ditsy Stars - Pigment White
5496-1W



Ditsy Stars - Dark Blue
5496-77



Medallion Panel - Patriotic
5497P-78

Select Fabrics from
Just Color!



Navy
1351-Navy



Red Delicious
1351-Red Delicious

Cutting

Cutting Instructions

Please note: All strips are cut across the width of fabric (WOF) from selvage to selvage edge unless otherwise noted.

WOF= Width of Fabric • LOF = Length of Fabric

Fabric A (5497P-78 Medallion Panel – Patriotic), fussy cut:

- (1) 33 ½" square, centered on the panel.
- (4) 2 ½" x 33 ½" strips, each centered on a row of stars.

Fabric B (1351-Navy Just Color! – Navy), cut:

- (1) 2 ½" x WOF strip, sub-cut (4) 2 ½" squares.

Fabric C (5496-1W Ditsy Stars – Pigment White), cut:

- (2) 1 ½" x 37 ½" WOF strips.
- (2) 1 ½" x 39 ½" WOF strips.
- (3) 1 ½" x WOF strips. Sew the strips together end to end with diagonal seams and cut (2) 1 ½" x 43 ½" strips.
- (3) 1 ½" x WOF strips. Sew the strips together end to end with diagonal seams and cut (2) 1 ½" x 45 ½" strips.
- See instructions to cut (4) Stars.

Fabric D (5495-78 Triangles – Patriotic), cut:

- (4) 2 ½" x 39 ½" WOF strips.

Fabric E (1351-Red Delicious Just Color! – Red Delicious), cut:

- (1) 2 ½" x WOF strip, sub-cut (4) 2 ½" squares.

Fabric F (5492-78 Border Strips – Patriotic), cut:

- (4) 8 ½" x 45 ½" LOF strips.

Fabric G (5496-77 Ditsy Stars – Dark Blue), cut:

- (1) 8 ½" x WOF strip, sub-cut (4) 8 ½" squares.

Fabric H (5493-88 Large Stars – Red), cut:

- (7) 2 ½" x WOF strips for the binding.

Backing (5494-78 Flag Collage – Patriotic), cut:

- (2) 69" x WOF strips. Sew the strips together and trim to 69" x 69" to make the back.

Sewing

Sew using a $\frac{1}{4}$ " seam allowance with right sides together (RST) unless otherwise indicated. Always press towards the darker fabric while assembling, unless otherwise noted by the arrows.

Block Assembly

Note: The arrows in figures represent the fabric print direction. Pay attention to the fabric and unit orientations when assembling the various components.

1. Sew (1) $2\frac{1}{2}$ " x $33\frac{1}{2}$ " Fabric A strip to each side of the $33\frac{1}{2}$ " Fabric A square. Sew (1) $2\frac{1}{2}$ " Fabric A square onto each end of the remaining (2) $2\frac{1}{2}$ " x $33\frac{1}{2}$ " Fabric B strips. Sew (1) of the newly sewn strips to the top and to the bottom of the Fabric A square to make the Center Block (Fig. 1).

2. Following the manufacturer's instructions, trace the listed number of each template onto the paper side of the fusible web. Roughly cut out each template about $\frac{1}{8}$ " outside the drawn lines.

3. Press each template onto the wrong side of the fabrics as listed on the templates. Cut out each template on the drawn lines.

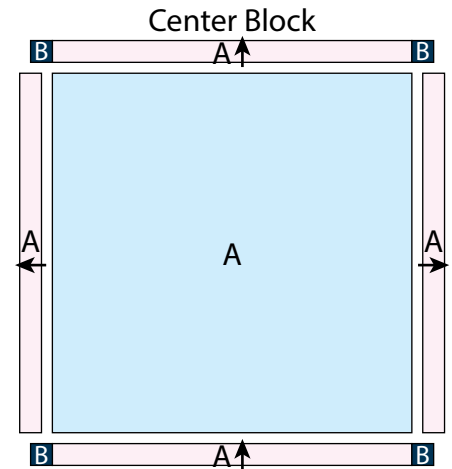


Fig. 1

4. Center (1) Fabric C star onto (1) $8\frac{1}{2}$ " Fabric G square (Fig. 2).

5. Finish the raw edges of each star with a decorative stitch such as a buttonhole or satin stitch to (1) Block One square.

6. Repeat Steps 4-5 to make (4) Block One squares total.

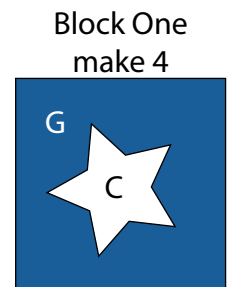


Fig. 2

Quilt Top Assembly

(Follow the Quilt Layout while assembling the quilt top.)

7. Sew (1) $1\frac{1}{2}$ " x $37\frac{1}{2}$ " Fabric C strip to each side of the Center Block. Sew (1) $1\frac{1}{2}$ " x $39\frac{1}{2}$ " Fabric C strip to the top and to the bottom of the Center Block.

8. Sew (1) $2\frac{1}{2}$ " x $39\frac{1}{2}$ " Fabric D strip to each side of the Center Block. Sew (1) $2\frac{1}{2}$ " Fabric E square onto each end of the remaining (2) $2\frac{1}{2}$ " x $39\frac{1}{2}$ " Fabric D strips to make the Inner Top Border and Inner Bottom Border. Sew the Inner Top Border and Inner Bottom border to the top and to the bottom of the Center Block.

9. Sew (1) $1\frac{1}{2}$ " x $43\frac{1}{2}$ " Fabric C strip to each side of the Center Block. Sew (1) $1\frac{1}{2}$ " x $45\frac{1}{2}$ " Fabric C strip to the top and to the bottom of the Center Block.

10. Sew (1) $8\frac{1}{2}$ " x $45\frac{1}{2}$ " Fabric F strip to each side of the Center Block. Sew (1) Block One square onto each end of the remaining (2) $8\frac{1}{2}$ " x $45\frac{1}{2}$ " Fabric F strips to make the Outer Top Border and Outer Bottom Border. Sew the Outer Top Border and Outer Bottom Border to the top and to the bottom of the Center Block to make the quilt top.

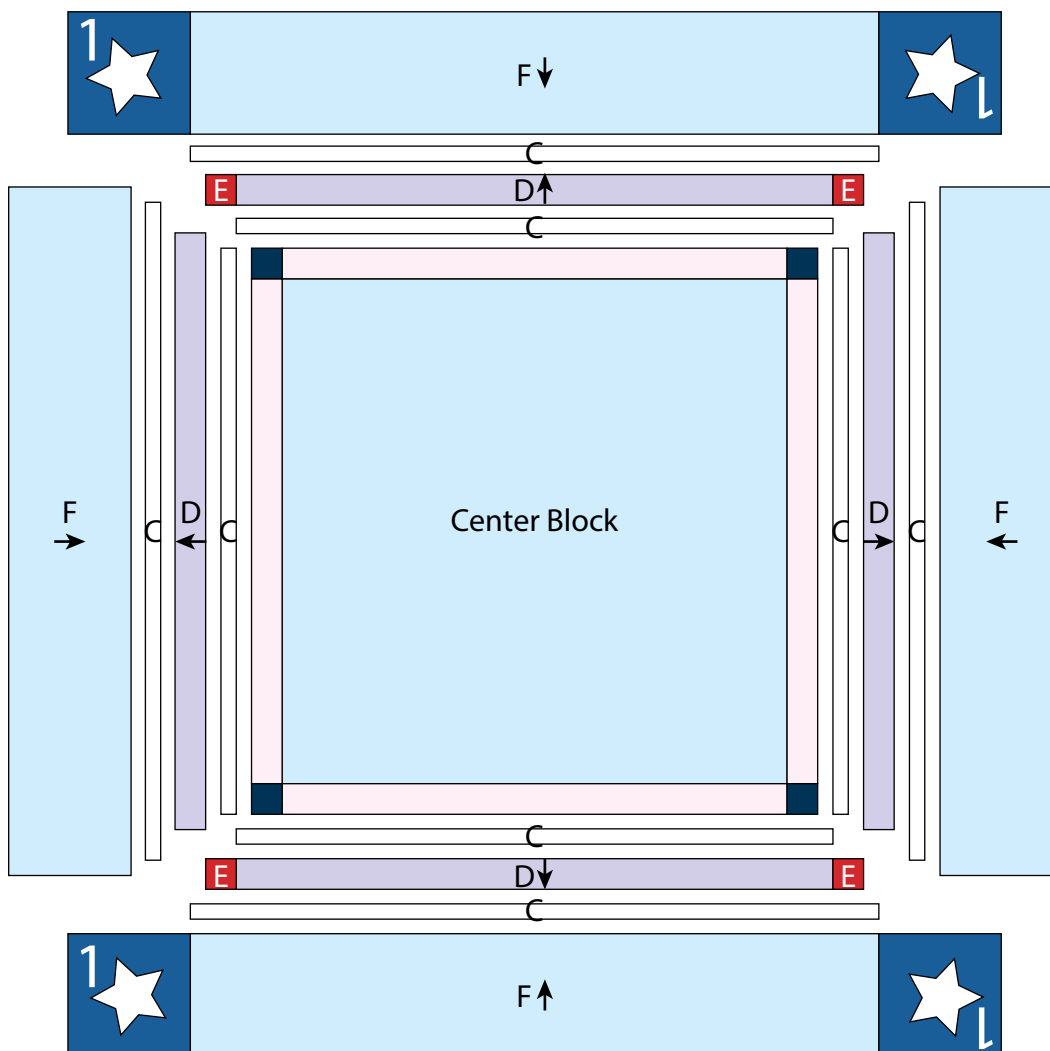
Layering, Quilting and Finishing

11. Press the quilt top and 69" x 69" backing well. Layer backing (wrong side up), batting, pressed quilt top (right side up) and baste. Quilt as desired and trim excess batting and backing when quilting is complete.

Binding

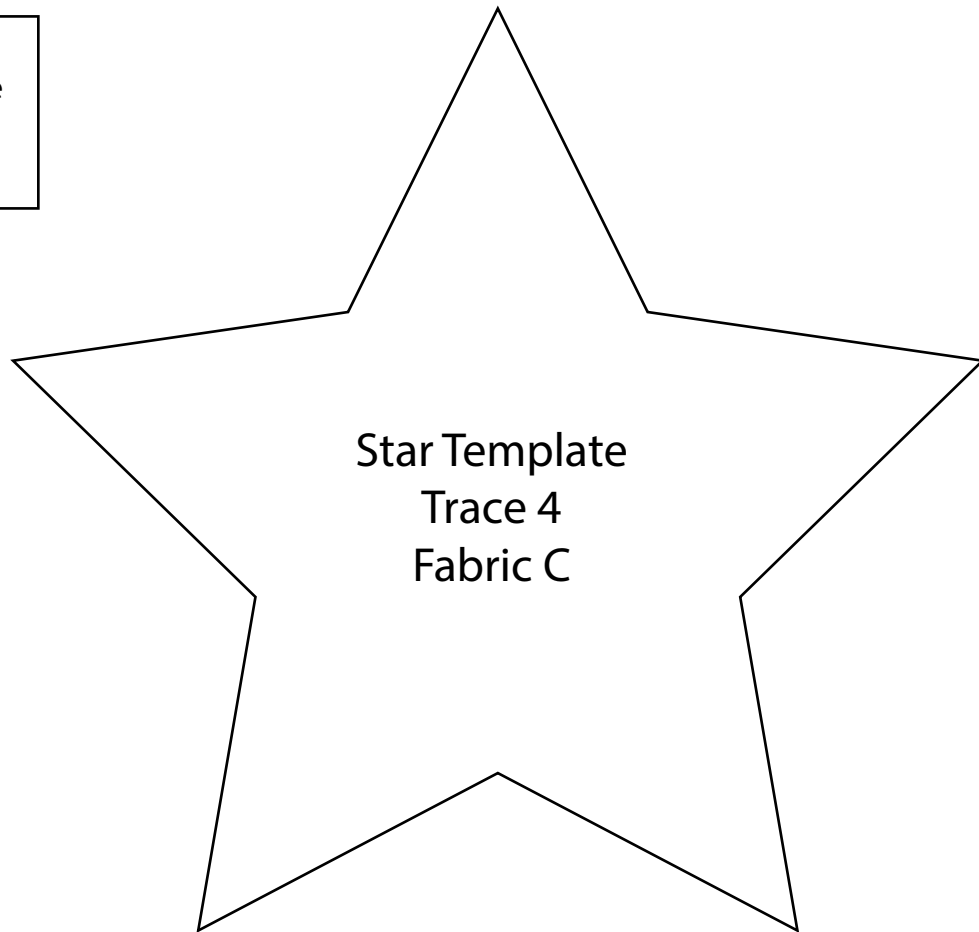
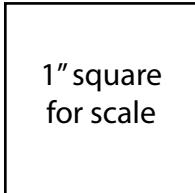
12. Cut the ends of the (7) Fabric H binding strips at a 45-degree angle and sew end to end to make (1) continuous piece of binding. Fold in half lengthwise and press wrong sides together.

13. Sew the binding to the front of the quilt, raw edges together. Turn the folded edge to the back, and hand stitch in place.



Quilt Layout

100% Template



*Every effort has been made to ensure that all projects are error free. All the information is presented in good faith, however no warranty can be given nor results guaranteed as we have no control over the execution of instructions. Therefore, we assume no responsibility for the use of this information or damages that may occur as a result. When errors are brought to our attention, we make every effort to correct and post a revision as soon as possible. Please make sure to check www.studioefabrics.net for pattern updates prior to starting the project. We also recommend that you test the project prior to cutting for kits. Finally, all free projects are intended to remain free to you and are **not for resale**.*