

Free Project
NOT FOR RESALE

QUILT 1

Beauty in Bloom



Featuring fabrics from the **Beauty in Bloom** collection from **STUDIO fabrics**

Fabric Requirements

(A) 4825-99.....	1/2 yard	(I) 4821-91.....	2-1/2 yards
(B) 4822-15	3/4 yard	(J) White Sugar-09....	3-7/8 yards
(C) 4822-66.....	3/4 yard	Backing 4823-99.....	8 yards
(D) 4822-99.....	3/4 yard		
(E) 4827-67.....	1 yard	*Includes Binding	
(F) 4827-55.....	1 yard		
(G) M. Batiks 3761-57*	1-1/8 yards		
(H) 4823-1.....	1-7/8 yards		

Additional Supplies Needed

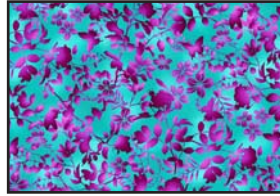
- Quilt size: 76" x 88"
- Sewing and Quilting thread
- Sewing and Quilting supplies
- Plastic for template, Fusible Web
- Batting: 84" x 96"
- Skill Level: Advanced Beginner

Quilt designed by Denise Russell

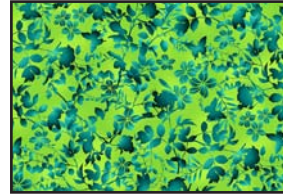
Fabrics in the Collection



Large Floral-Charcoal
4821-91



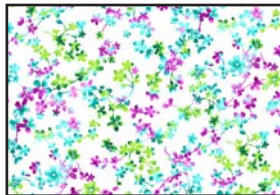
Tonal Vine-Lt. Blue/Magenta
4822-15



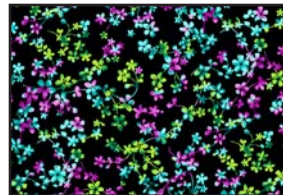
Tonal Vine-Lime Green
4822-66



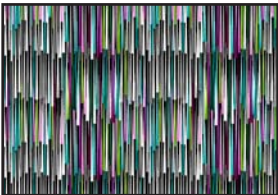
Tonal Vine-Black
4822-99



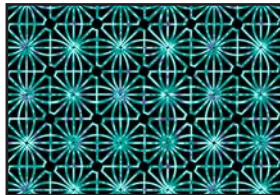
Small Floral-White
4823-1



Small Floral-Black
4823-99



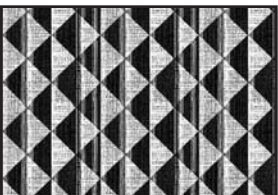
Striped Geometric-Black
4824-91



Square Geometric-Black
4825-99



Triangle Geometric- Multi
4826-65



Triangle Geometric-Charcoal
4826-91



Texture-Magenta
4827-55



Texture-Peacock
4827-67



Texture-Charcoal
4827-91

Selected Fabric from
Modern Batiks



Circle purple
3761-57

Selected Fabric from
Peppered Cottons



White Sugar-09

Cutting

Cutting Instructions

*Please note: All strips are cut across the width of the fabric (WOF) from selvage to selvage unless otherwise noted.
(WOF = Width of Fabric, LOF = Length of Fabric)*

Fabric A (4825-99 Square Geometric-Black), cut:

*(1) 12-1/2" x WOF strip. Sub-cut (3) 12-1/2" squares.

Fabric B (4822-15 Tonal Vine-Light Blue/Magenta), cut:

*(2) 12-1/2" x WOF strips. Sub-cut (4) 12-1/2" squares.

Fabric C (4822-66 Tonal Vine-Lime Green), cut:

*(2) 12-1/2" x WOF strips. Sub-cut (4) 12-1/2" squares.

Fabric D (4822-99 Tonal Vine-Black), cut:

*(2) 12-1/2" x WOF strips. Sub-cut (4) 12-1/2" squares.

Fabric E (4827-67 Texture-Peacock), cut:

*(4) 7-1/2" x WOF strips. Sub-cut (30) applique' shapes using template (see step 4).

Fabric F (4827-55 Texture-Magenta), cut:

*(4) 7-1/2" x WOF strips. Sub-cut (30) applique' shapes using template (see step 4).

Fabric G (Modern Batik 3761-57), cut:

*(8) 1-1/2" x WOF strips for border 2.

*(9) 2-1/2" x WOF strips for binding.

Fabric H (4823-1 Small Floral-White), cut:

*(5) 12-1/2" x WOF strips. Sub-cut (15) 12-1/2" squares.

Fabric I (4821-91 Large Floral-Charcoal), cut:

*(2) 5-1/2" x LOF strips for the left and right sides of border 3.

*(5) 5-1/2" x WOF strips for the top and bottom of border 3.

Fabric J (Peppered Cottons-09 White Sugar), cut:

*(7) 2-1/2" x WOF strips for border 1.

*(120) shapes using template (see step 2).

Sewing

Measurements include 1/4" seam allowances. Sew with right sides together unless otherwise stated. If no direction is specified, press seam toward darker fabric.

Block Assembly

- Trace applique' shape (last page) on the plastic for templates. Cut on the outline. Trace template on the smooth side of the fusible web 180 times. Cut each shape 1/8" outside the outline.
- Fuse **120** of the step 1 applique' shapes to the wrong side of the Fabric J. Cut 60 of them exactly on the outline (Shapes X) and 60 of them 1/8" **inside** the outline (Shapes Y - these will be the 'liners', to prevent the dark background fabrics to show through), and remove paper backing.
- Fold and crease the Fabrics A, B, C, and D 12-1/2" background squares diagonally twice. Position the applique Shapes Y on the squares using the creased guidelines and fuse them according to the fusible web manufacturer's instructions. Position the Shapes X atop the fused Shapes Y and fuse them. Machine applique using white thread and the blanket stitch (*figure 1*). Make a total of fifteen blocks.



Make 4.



Make 3.



Make 4.

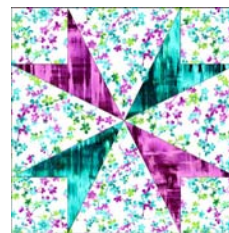


Make 4.

Figure 1

- Fuse the remaining 60 shapes as follows: 30 onto the wrong side of Fabric E and 30 onto the wrong side of Fabric F. Cut them on the outline and remove paper backing.

- Fold and crease the Fabric H 12-1/2" background squares diagonally twice. Position two Fabric E and two Fabric F applique' shapes on each block, applique' shapes on the squares using the creased guidelines and fuse them according to the fusible web manufacturer's instructions. Machine applique using matching thread and the blanket stitch (*figure 2*). Make fifteen blocks.



Make 15.

Figure 2

Quilt Top Assembly

(Follow the quilt diagram and photograph while assembling the quilt top.)

- Following the quilt photo for block placement, lay out six rows of five alternating blocks each. Sew the blocks together in each row, then sew the rows together in order, matching adjacent seams.
- For border 1, sew the seven 2-1/2" Fabric J strips together end to end using diagonal seams. Measure the vertical length of the quilt top through the center and cut two border strips that length. Sew one strip to each side of the quilt top. Measure the width of the quilt top through the center. Cut two border strips that length and sew one to the top and one to the bottom. Press the seams toward the borders.
- Repeat step 7 with the eight 1-1/2" Fabric G strips to make and add border 2.
- For the sides of border 3, measure the vertical length of the quilt top through the center and trim the two Fabric I border strips cut (which were cut on the

Sewing Cont.

LOF) that length. Sew one strip to each side of the quilt top. Press seams toward the borders.

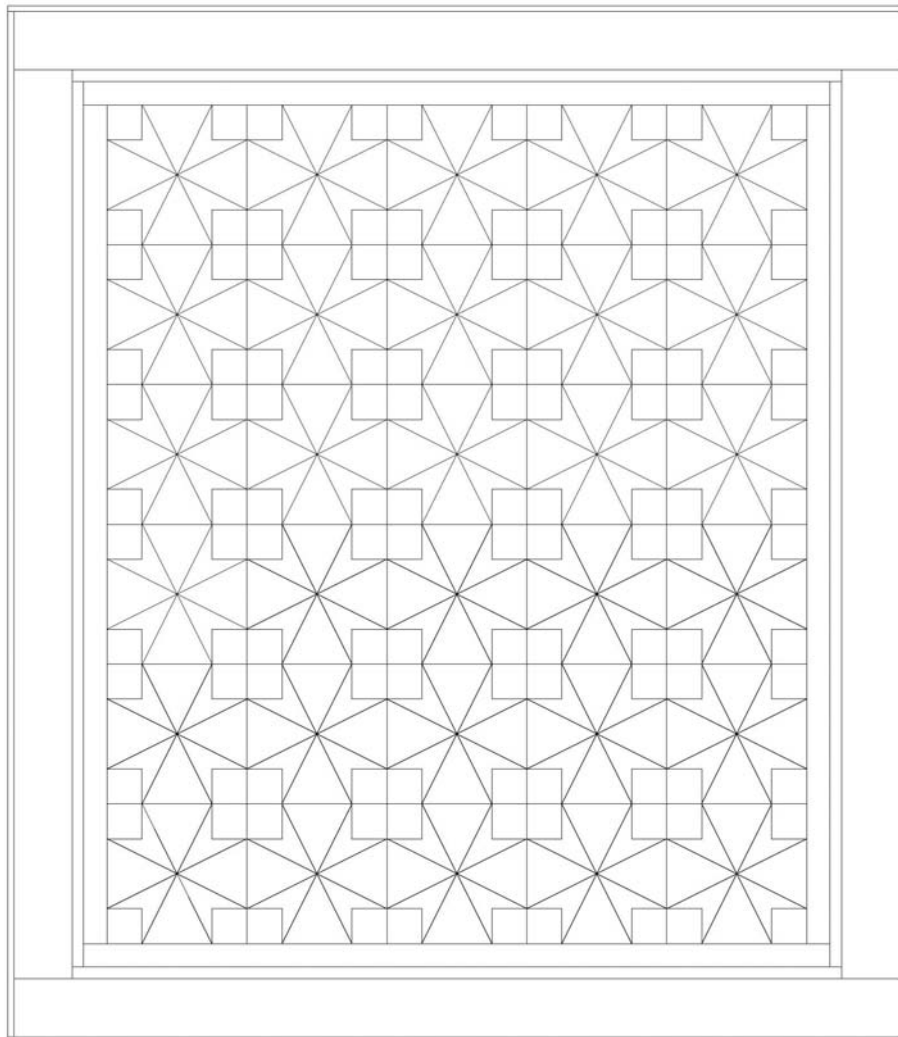
10. For the top and bottom of border 3, sew the remaining five Fabric I strips (which were cut on the WOF) together end to end using straight seams. Measure the width of the quilt top through the center. Cut two border strips that length and sew one to the top and one to the bottom. Press the seams toward the borders.

Layering, Quilting, and Finishing

11. Create a quilt sandwich with the batting between the quilt top and the backing. Pin or baste layers together, mark quilting design, and quilt by hand or machine. When quilting is complete, remove pins or basting, and trim batting and backing even with raw edges of the quilt top.

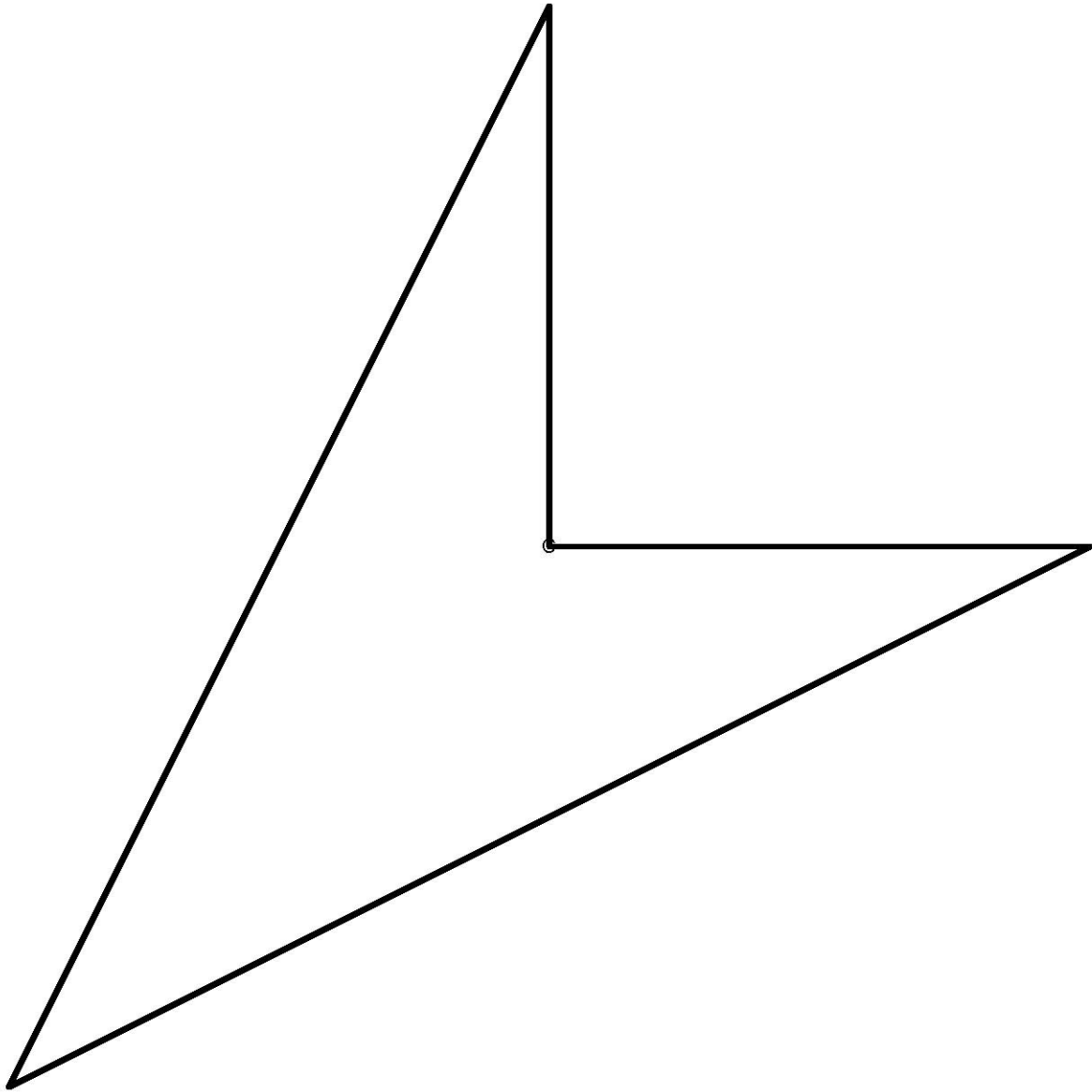
Binding

12. Join the nine 2-1/2" Fabric G binding strips together end to end using a diagonal seam to make one long strip. Press in half lengthwise. Sew binding to the edges of the quilt top, mitering corners, and overlapping ends. Fold binding to the back of the quilt and stitch it in place by hand to finish.



Quilt Diagram

Template



©2018 Studio e Fabrics®

Every effort has been made to ensure that all projects are error free. All the information is presented in good faith; however, no warranty can be given nor results guaranteed as we have no control over the execution of instructions. Therefore, we assume no responsibility for the use of this information or damages that may occur as a result. When errors are brought to our attention, we make every effort to correct and post a revision as soon as possible. Please make sure to check www.studioefabrics.com for pattern updates prior to starting the project. We also recommend that you test the project prior to cutting for kits. Finally, all free projects are intended to remain free to you and are not for resale.