



# Chromaview

Quilt 2  
by Denise Russell



Quilt size: 72" x 84"

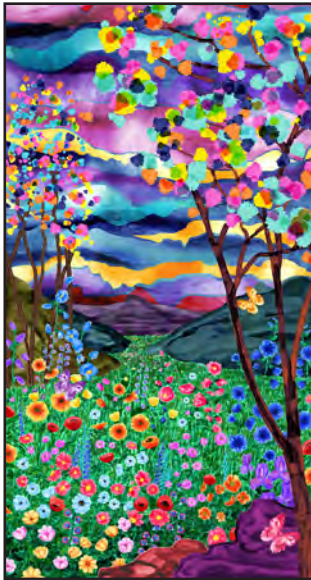
Skill Level: Beginner

**Blank Quilting Corporation**  
49 West 37th Street ♦ New York, NY 10018  
Tel: 800-294-9495 ♦ Fax: 212-679-4578  
[www.blankquilting.net](http://www.blankquilting.net)

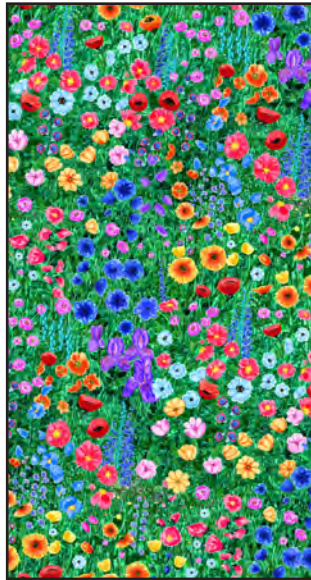
**facebook**

Free Project  
NOT FOR RESALE

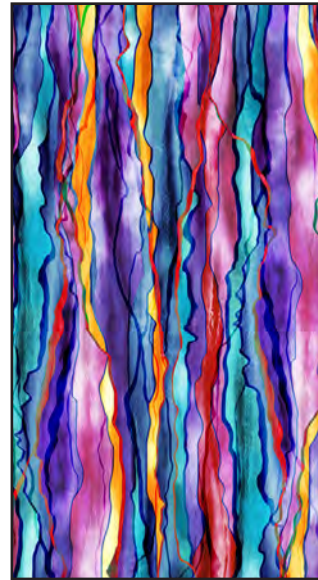
# Chromaview - Fabrics in the Collection



9724P-66 Panel Green



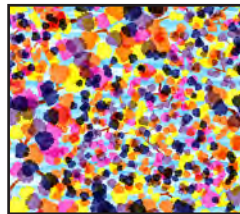
9725-66 Allover Floral Green



9726-70 Stripe - Blue



9727-77 Branches with Buds - Navy



9728-22 Dots - Pink



9729-33 Trees - Peach



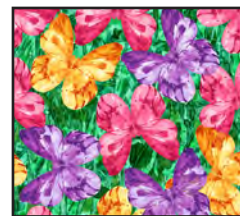
9729-55 Trees - Purple



9729-60 Trees - Lt. Green



9729-70 Trees - Lt. Blue



9730-66 Butterflies - Green

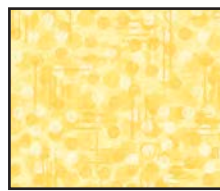
## Selected Fabrics from JotDot



9570-11 Lt. Blue



9570-22 Fuchsia



9570-44 Yellow



9570-66 Green



3955 Eclipse White

## Materials

*Yardages and cutting instructions are based on 42" of usable fabric width.*

3/8 yard JotDot 9570-22 Fuchsia  
1/2 yard 9729-55 Trees-Purple  
1/2 yard 9728-22 Dots-Pink  
5/8 yard 9727-77 Branches with Buds-Navy  
2/3 yard 9726-70 Stripe-Blue  
2/3 yard JotDot 9570-66 Green  
7/8 yard 9730-66 Butterflies-Green  
7/8 yard 9725-66 Allover Floral-Green  
1 yard JotDot 9570-44 Yellow  
1 yard JotDot 9570-11 Lt. Blue  
2-3/4 yards 3955 Eclipse-White  
7-2/3 yards 9729-60 Trees-Lt. Green for backing  
80" x 92" piece of batting

## Cut Fabrics

*Note: All strips are cut across the width of the fabric (WOF) from selvage to selvage unless otherwise noted. If cut across the length of the fabric (LOF), the LOF notation will be indicated.*

### From JotDot 9570-22 Fuchsia:

\*Cut two 2-1/2" x WOF strips. Sub-cut twenty-four 2-1/2" squares.

\*Cut two 2-7/8" x WOF strips. Sub-cut twenty-four 2-7/8" squares.

### From 9729-55 Trees-Purple:

\*Cut three 4-1/2" x WOF strips. Sub-cut forty-eight 2-1/2" x 4-1/2" rectangles. (A)

### From 9728-22 Dots-Pink:

\*Cut three 4-1/2" x WOF strips. Sub-cut forty-eight 2-1/2" x 4-1/2" rectangles. (B)

### From 9727-77 Branches with Buds-Navy:

\*Cut four 4-1/2" x WOF strips. Sub-cut fifty-six 2-1/2" x 4-1/2" rectangles. (C)

### From 9726-70 Stripe-Blue:

\*Cut eight 2-1/2" x WOF strips. Sub-cut 120 2-1/2" squares.

### From JotDot 9570-66 Green:

\*Cut eight 2-1/2" x WOF strips for binding.

### From 9730-66 Butterflies-Green:

\*Cut seven 3-1/2" x WOF strips for border 2.

### From 9725-66 Allover Floral-Green:

\*Cut six 4-1/2" x WOF strips. Sub-cut eighty-eight 2-1/2" x 4-1/2" rectangles. (D)

### From JotDot 9570-44 Yellow:

\*Cut four 2-1/2" x WOF strips. Sub-cut fifty-two 2-1/2" squares.

\*Cut four 2-7/8" x WOF strips. Sub-cut fifty-two 2-7/8" squares.

\*Cut two 4-1/2" x WOF strips. Sub-cut eleven 4-1/2" squares.

### From JotDot 9570-11 Lt. Blue:

\*Cut three 2-1/2" x WOF strips. Sub-cut forty-four 2-1/2" squares.

\*Cut four 2-7/8" x WOF strips. Sub-cut forty-four 2-7/8" squares.

\*Cut three 4-1/2" x WOF strips. Sub-cut nineteen 4-1/2" squares.

### From 3955 Eclipse-White:

\*Cut fifteen 2-1/2" x WOF strips. Sub-cut 240 2-1/2" squares.

\*Cut nine 2-7/8" x WOF strips. Sub-cut 120 2-7/8" squares.

\*Cut fifteen 2" x WOF strips (seven for border 1 and eight for border 3).

## Assemble Blocks

*Note: Measurements include 1/4" seam allowances. Sew with right sides together unless otherwise stated. If no direction is specified, press seams toward darker fabric.*

1. Draw a diagonal line on the wrong side of fifty-two 2-7/8" Eclipse White squares. With right sides together, layer the marked White squares atop the 2-7/8" JotDot Yellow squares. Stitch 1/4" on each side of the marked line, cut on the drawn line, press each unit open with the seam toward the dark fabric, and trim

dog ears (*figure 1*). Make a total of 104 White/Yellow 2-1/2" half-square triangles.



Figure 1 – Make 104.

2. Draw a diagonal line on the wrong side of forty-eight 2-1/2" Eclipse White squares. With right sides together, layer a marked White square on the left short end of a 2-1/2" x 4-1/2" Trees-Purple rectangle A and stitch on the drawn line. Trim 1/4" away from the seam line and press open. In the same manner, stitch another White square to the opposite end of the same rectangle. Repeat to make a total of twenty-four 2-1/2" x 4-1/2" flying-geese units (*figure 2*).



Figure 2 – Make 24.

3. Sew two Trees-Purple rectangles A to opposite sides of a 4-1/2" JotDot Lt. Blue square. Press seams toward square (*figure 3*). Repeat to make six block centers.



Figure 3

4. Sew two 2-1/2" JotDot Yellow squares to opposite ends of the remaining Trees-Purple rectangles A (*figure 4*). Press seams toward squares. Repeat to make twelve strips.



Figure 4 – Make 12.

5. Sew a step 4 strip to the top and one to the bottom of the step 3 block centers (*figure 5*). Press seams away from center.

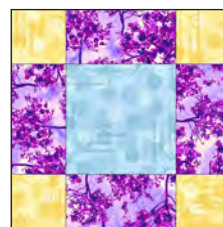


Figure 5

6. Noticing fabric orientation, sew a step 1 half-square triangle to both ends of a step 2 flying geese (*figure 6*). Press seams toward flying geese. Repeat to make twenty-four strips.



Figure 6 – Make 24.

7. Sew two step 6 strips to opposite sides of the step 5 block centers (*figure 7*). Press seams toward the center.

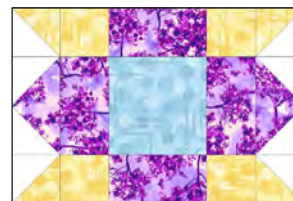


Figure 7

8. Sew a 2-1/2" Stripe Blue square to both ends of the remaining step 6 trips (*figure 8*). Press seams toward the squares.



Figure 8

9. Sew a step 8 strip to the top and one to the bottom of the block to make six blocks 1 (*figure 9*). Press seams toward the strips.

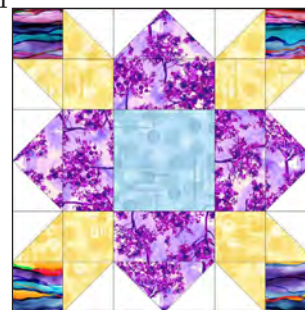
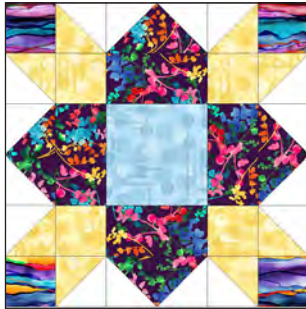
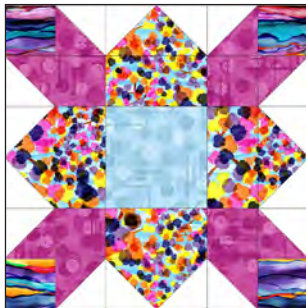


Figure 9 – Block 1: Make 6.

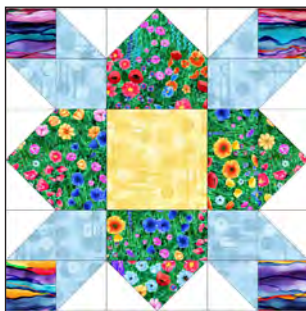
10. Repeat steps 1-9 with the following fabric combinations (*Table 1 on next page, and Figure 10*):



Block 2 - Make 7.



Block 3 - Make 6.



Block 4 - Make 11.

Figure 10

## Assemble Quilt Top

11. Following the quilt photo and diagram for block placement, lay out six rows of five blocks each. Sew the blocks together in each row, then sew the rows together in order, matching adjacent seams.

12. For border 1, sew together the seven 2" Eclipse White strips end to end using diagonal seams. Measure the vertical length of the quilt top through the center and cut two border strips that length. Sew strips to the sides of the quilt top. Measure the width of the

quilt top through its center. Cut two border strips that length and sew one to the top and one to the bottom. Press seams toward borders.

13. Repeat step 12 with the seven 3-1/2" Butterflies-Green strips to make and add border 2.

14. Repeat step 12 with the remaining eight 2" Eclipse White strips to make and add border 3.

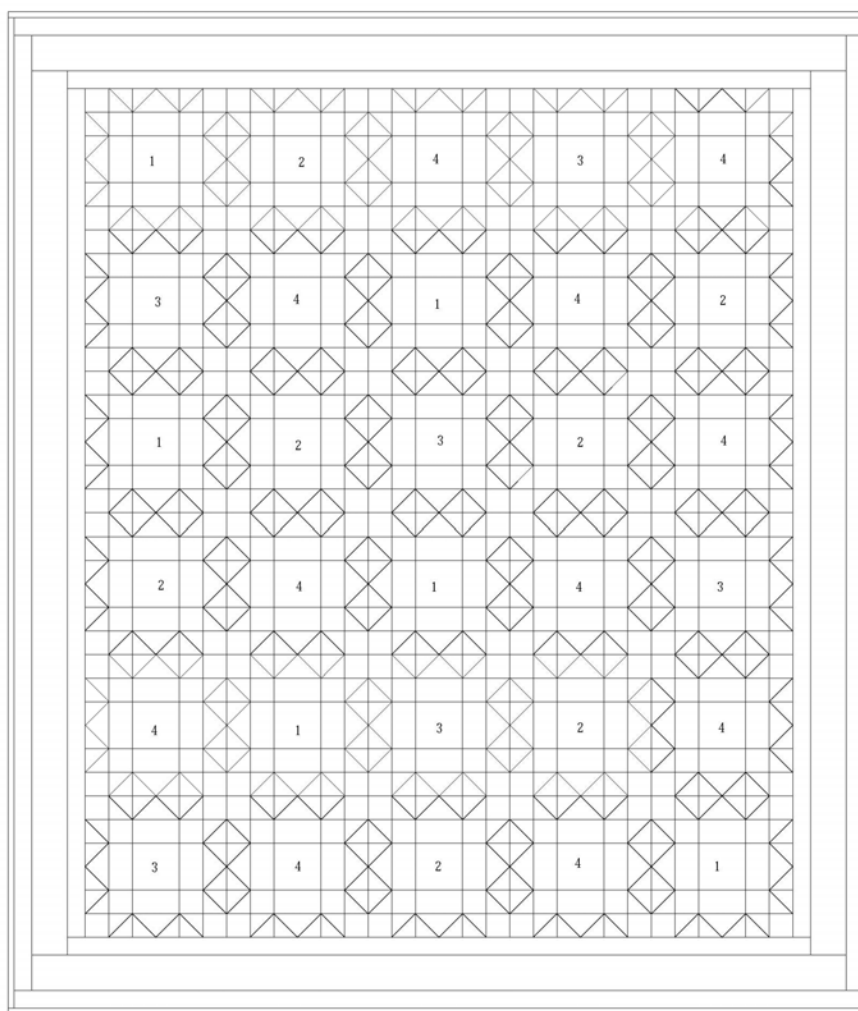
## Finishing

15. Create a quilt sandwich with the batting between the quilt top and the backing. Pin or baste layers together, mark quilting design, and quilt by hand or machine. When quilting is complete, remove pins or basting, and trim batting and backing even with raw edges of the quilt top.

16. Join the eight 2-1/2" Green binding strips together end to end using a diagonal seam to make one long strip. Press in half lengthwise. Sew binding to the edges of the quilt top, mitering corners, and overlapping ends. Fold binding to the back of the quilt and stitch it in place by hand to finish.

	<b>Block 2 – Make 7</b>	<b>Block 3 – Make 6</b>	<b>Block 4 – Make 11</b>
<b>Half-square triangles</b>	28 each 2-7/8" Eclipse White and JotDot Yellow squares	24 each 2-7/8" Eclipse White and JotDot Fuchsia squares	44 each 2-7/8" Eclipse White and JotDot Lt. Blue squares
<b>Flying Geese</b>	28 rectangles C and 56 Eclipse White 2-1/2" squares	24 rectangles B and 48 Eclipse White 2-1/2" squares	44 rectangles D and 88 Eclipse White 2-1/2" squares
<b>Rectangles</b>	28 rectangles C	24 rectangles B	44 rectangles D
<b>Center Square</b>	7 4-1/2" JotDot Lt. Blue squares	6 4-1/2" JotDot Lt. Blue squares	11 4-1/2" JotDot Yellow squares

Table 1. Fabric combinations for blocks 2, 3, and 4.



Quilt Diagram

©2019 Blank Quilting Corporation

*Every effort has been made to ensure that all projects are error free. All the information is presented in good faith; however, no warranty can be given nor results guaranteed as we have no control over the execution of instructions. Therefore, we assume no responsibility for the use of this information or damages that may occur as a result. When errors are brought to our attention, we make every effort to correct and post a revision as soon as possible. Please make sure to check [www.blankquilting.net](http://www.blankquilting.net) for pattern updates prior to starting the project. We also recommend that you test the project prior to cutting for kits. Finally, all free projects are intended to remain free to you and are not for resale.*