

A Free Project Sheet
NOT FOR RESALE

Le Petit Jardin

QUILT 1



Featuring fabrics from the **Le Petit Jardin** collection by **Dana Saulnier** for **STUDIO·e·fabrics**

Fabric Requirements

(A) 5063P-16	1 panel
(B) 5071-1	1 ½ yards
(C) 5066-16	1 ¼ yards
(D) 5064-66	1 ¼ yards
(E) 5069-1	¼ yard
(F) 5068-33	¾ yard*
(G) 5067-11	½ yard
(H) 5070-22	½ yard

(I) 5065-33	½ yard
Backing	
5069-1	4 ¾ yards

* Includes Binding

Additional Supplies Needed

Batting 67" x 82" (Recommended:
Air Lite® Colour Me 100% Cotton)
Piecing and sewing thread
Quilting and sewing supplies

Quilt designed by Heidi Pridemore
Finished Quilt Size 59" x 74"
Skill Level: Advanced Beginner

Please check our website for pattern updates before starting this project.

Fabrics in the Collection



Green House Banner Panel - Cyan
5063P-16



Garden - Kiwi
5064-66



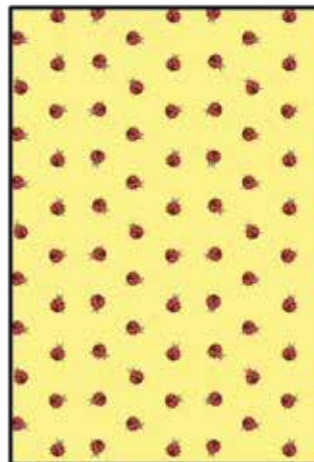
Tossed Bunnies - Lemon
5065-33



Border Stripe - Cyan
5066-16



Gardener Bees - Light Blue
5067-11



Lady Bugs - Lemon
5068-33



Veggies - White
5069-1



Small Floral - Pink
5070-22



Garden Tools - White
5071-1



Garden Tools - Teal
5071-77

Cutting

Cutting Instructions

Please note: All strips are cut across the width of fabric (WOF) from selvage to selvage edge unless otherwise noted.

WOF= Width of Fabric • LOF = Length of Fabric

Fabric A (5063P-16 Green House Banner Panel – Cyan):

- Fussy cut (1) 21 ½" x 39 ½" WOF strip centered on the house.

Fabric B (5071-1 Garden Tools – White), cut:

- (4) 4 ½" x WOF strips. Sew the strips together end to end with diagonal seams and cut (2) 4 ½" x 66 ½" strips.
- (3) 4 ½" x WOF strips. Sew the strips together end to end with diagonal seams and cut (2) 4 ½" x 59 ½" strips.
- (4) 2" x 39 ½" WOF strips.
- (2) 2" x 24 ½" WOF strips.
- (3) 2" x WOF strips. Sew the strips together end to end with diagonal seams and cut (2) 2" x 51 ½" strips.

Fabric C (5066-16 Border stripe – Cyan), cut:

- (2) 5 ½" x 36 ½" LOF strips.

Fabric D (5064-66 Garden – Kiwi), cut:

- (2) 7" x 41 ½" LOF strips.

Fabric E (5069-1 Veggies – White), cut:

- (1) 6 ½" x WOF strip, sub-cut (4) 6 ½" squares.

Fabric F (5068-33 Lady Bugs – Lemon), cut:

- (2) 3 ½" x WOF strips, sub-cut (16) 3 ½" squares.
- (7) 2 ½" x WOF strips for the binding.

Fabric G (5067-11 Garden Bees – Light Blue), cut:

- (2) 3 ½" x WOF strips, sub-cut (12) 3 ½" x 6 ½" strips.
- (1) 6 ½" x WOF strip, sub-cut (9) 6 ½" x 3 ½" strips.

Fabric H (5070-22 Small Floral – Pink), cut:

- (4) 3 ½" x WOF strips, sub-cut (21) 3 ½" x 6 ½" strips.

Fabric I (5065-33 Tossed Bunnies – Lemon), cut:

- (4) 3 ½" x WOF strips, sub-cut (20) 3 ½" x 6 ½" strips.

Backing (5069-1 Veggies – White), cut:

- (2) 82" x WOF strips. Sew the strips together and trim to 67" x 82" to make the back.

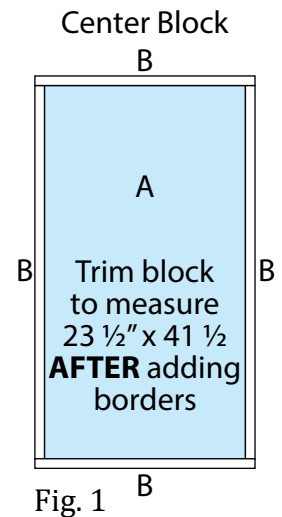
Sewing

Sew using a $\frac{1}{4}$ " seam allowance with right sides together (RST) unless otherwise indicated. Always press towards the darker fabric while assembling, unless otherwise noted.

Block Assembly

Note: The arrows in figures represent the fabric print direction. Pay attention to the fabric and unit orientations while assembling the various components.

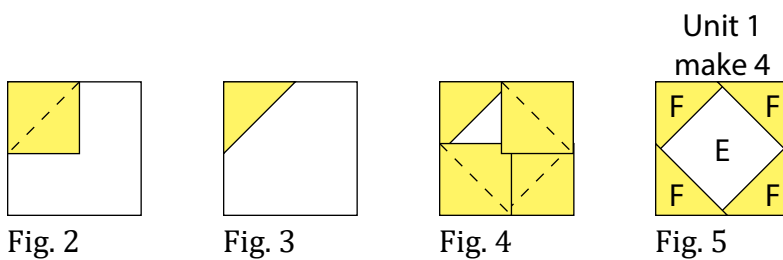
1. Sew (1) $2'' \times 39 \frac{1}{2}''$ Fabric B strip to each side of the $21 \frac{1}{2}'' \times 39 \frac{1}{2}''$ Fabric A strip. Sew (1) $2'' \times 24 \frac{1}{2}''$ Fabric B strip to the top and to the bottom of the Fabric A strip. Trim the block to measure $23 \frac{1}{2}'' \times 41 \frac{1}{2}''$ to make the Center Block (Fig. 1).



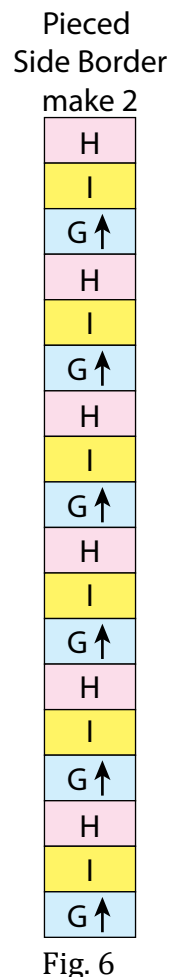
2. Place (1) $3 \frac{1}{2}''$ Fabric F square on the top left corner of (1) $6 \frac{1}{2}''$ Fabric E square, right sides together (Fig. 2). Sew across the diagonal of the smaller square from the upper right corner to the lower left corner (Fig. 2). Trim away the excess fabric from behind the triangle $\frac{1}{4}''$ away from the sewn seam. Flip open the triangle formed and press (Fig. 3).

3. Follow Figure 4 for the seam direction to add a $3 \frac{1}{2}''$ Fabric F square to each of the remaining corners of the $6 \frac{1}{2}''$ Fabric E square to make (1) Unit 1 square (Fig. 5).

4. Repeat Steps 2-3 to make (4) Unit 1 squares total.



5. Sew (18) assorted $3 \frac{1}{2}'' \times 6 \frac{1}{2}''$ strips together lengthwise to make (1) Pieced Side Border (Fig. 6). Repeat to make a second Pieced Side Border.



6. Sew (13) assorted $3 \frac{1}{2}'' \times 6 \frac{1}{2}''$ strips together lengthwise. Sew (1) Unit 1 square to each end of the newly sewn strip to make the Pieced Top Border (Fig. 7). Repeat to make the Pieced Bottom Border (Fig. 8).

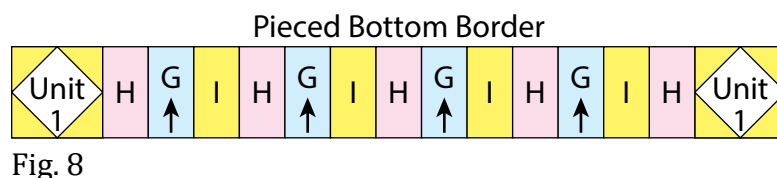
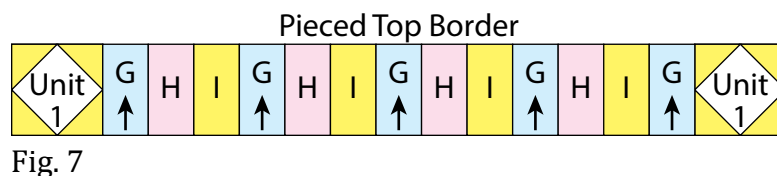


Fig. 6

Quilt Top Assembly

(Follow the Quilt Layout while assembling the quilt top.)

- Sew (1) 7" x 41 1/2" Fabric D strip to each side of the Center Block. Sew (1) 5 1/2" x 36 1/2" Fabric C strip to the top and to the bottom of the Center Block.
- Sew (1) 2" x 51 1/2" Fabric B strip to each side of the Center Block. Sew (1) 2" x 39 1/2" Fabric B strip to the top and to the bottom of the Center Block.
- Sew (1) Pieced Side Border to each side of the Center Block.
- Sew the Pieced Top Border and Pieced Bottom Border to the top and to the bottom of the Center Block.

11. Sew (1) 4 1/2" x 66 1/2" Fabric B strip to each side of the Center Block. Sew (1) 4 1/2" x 59 1/2" Fabric B strip to the top and to the bottom of the Center Block to make the quilt top.

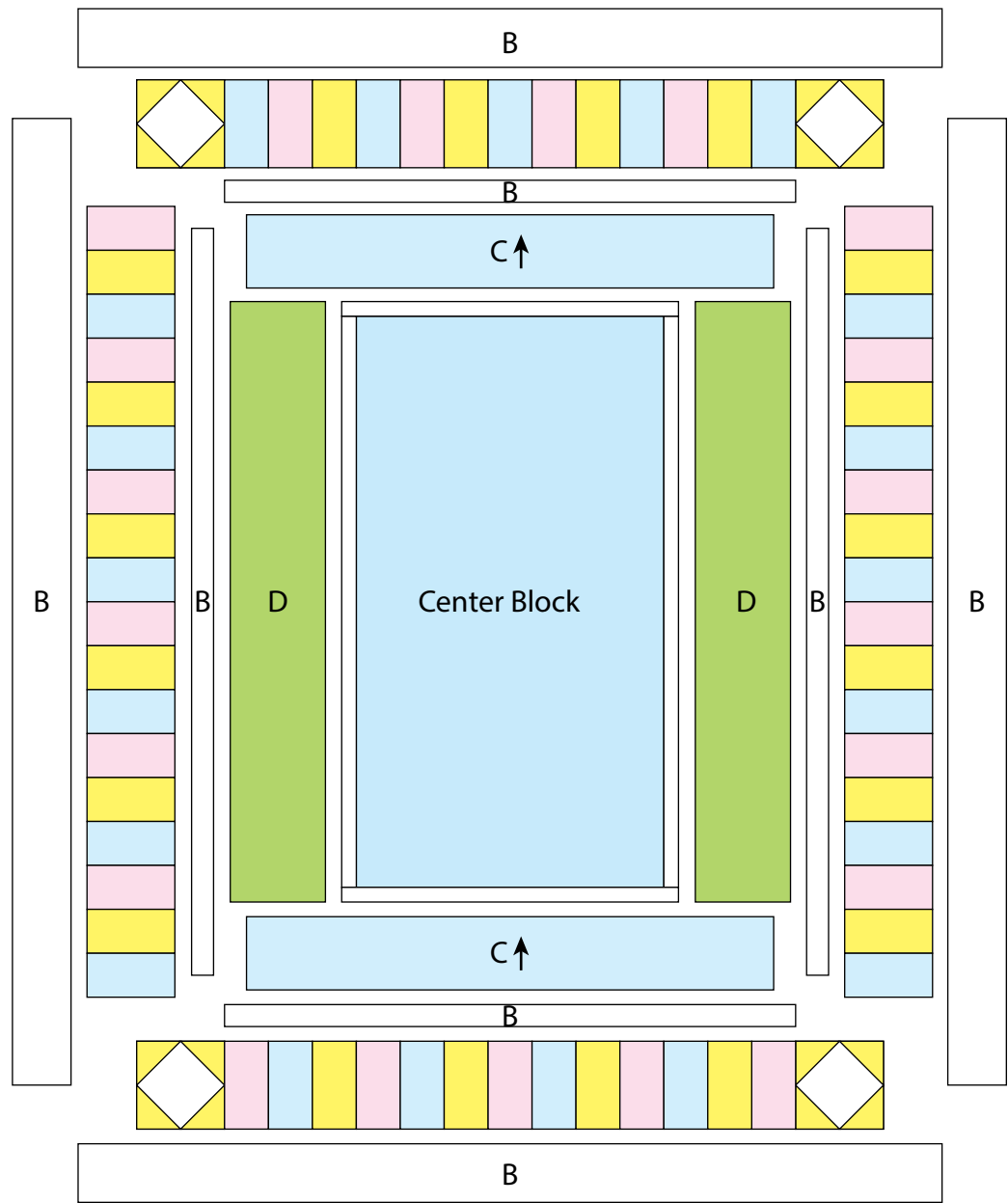
Layering, Quilting and Finishing

12. Press the quilt top and 67" x 82" backing well. Layer backing (wrong side up), batting, pressed quilt top (right side up) and baste. Quilt as desired and trim excess batting and backing when quilting is complete.

Binding

13. Cut the ends of the (7) Fabric F binding strips at a 45-degree angle and sew end to end to make (1) continuous piece of binding. Fold in half lengthwise and press wrong sides together.

14. Sew the binding to the front of the quilt, raw edges together. Turn the folded edge to the back, and hand stitch in place.



Quilt Layout

Every effort has been made to ensure that all projects are error free. All the information is presented in good faith, however no warranty can be given nor results guaranteed as we have no control over the execution of instructions. Therefore, we assume no responsibility for the use of this information or damages that may occur as a result. When errors are brought to our attention, we make every effort to correct and post a revision as soon as possible. Please make sure to check www.studioefabrics.net for pattern updates prior to starting the project. We also recommend that you test the project prior to cutting for kits. Finally, all free projects are intended to remain free to you and are not for resale.