

A Free Project Sheet
NOT FOR RESALE

Merry Town

QUILT 1



Featuring fabrics from the **Merry Town** collection by **Sharla Fults** for **STUDIO e fabrics**

Fabric Requirements

- (A) 6374P-89 1 panel
- (B) 6368-66 1 ¼ yards*
- (C) 6369-68 ¼ yard
- (D) 1351-Burgundy** ¼ yard
- (E) 1351-Pigment White** ⅓ yard
- (F) 6362-96 ¼ yard
- (G) 6364-8 ½ yard
- (H) 6363-89 ½ yard

- (I) 6373-89 2 ⅛ yards
- Backing
- 6361-89 4 ¼ yards

* Includes Binding
** Just Color! Collection

Additional Supplies Needed

- Batting 70" x 76" (Recommended:
Air Lite® Colour Me 100% Cotton)
- Piecing and sewing thread
- Quilting and sewing supplies

Quilt designed by Heidi Pridemore
Finished Quilt Size 62" x 68"
Skill Level: Advanced Beginner

Please check our website for pattern updates before starting this project.

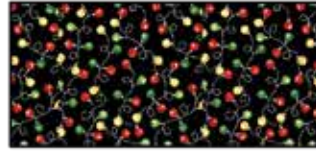
Fabrics in the Collection



Packed Characters
Multi - 6361-89



String of Lights
White - 6362-6



String of Lights
Black - 6362-96



Tossed Characters
Multi - 6363-89



Tossed Packages
White - 6364-8



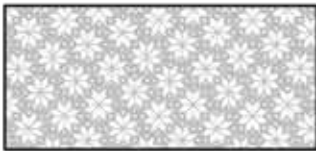
Tossed Snowman
White - 6365-8



Diagonal Stripe
Red - 6366-80



Set Flake
Red - 6367-80



Set Flake
Gray - 6367-90



Diagonal Plaid
Green - 6368-66



Diagonal Plaid
Red - 6368-88



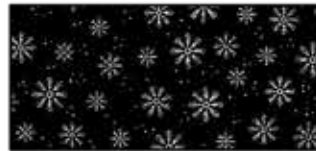
Tossed Cardinal on Branch
Multi - 6369-68



Tossed Candy Cane
Red - 6370-80



Tossed Snowflakes
Gray - 6371-9



Tossed Snowflakes
Black - 6371-99



Border Stripe
Multi - 6373-89



9.5in x 9.5 in Blocks
Multi - 6372-89



Panel 36in x 44in
Multi - 6374P-89

Select Fabrics from
Just Color!



Burgundy
1351-Burgundy



Pigment White
1351-Pigment White

Cutting

Cutting Instructions

Please note: All strips are cut across the width of fabric (WOF) from selvage to selvage edge unless otherwise noted.

WOF= Width of Fabric • LOF = Length of Fabric

Fabric A (6374P-89 Panel 36in x 44in – Multi):

- Fussy cut (1) 32 ½" x 38 ½" rectangle, centered on the panel.

Fabric B (6368-66 Diagonal Plaid – Green), cut:

- (2) 3" x 38 ½" WOF strips.
- (2) 3" x 37 ½" WOF strips.
- (3) 2" x WOF strips. Sew the strips together end to end with diagonal seams and cut (2) 2" x 54 ½" strips.
- (3) 2" x WOF strips. Sew the strips together end to end with diagonal seams and cut (2) 2" x 51 ½" strips.
- (7) 2 ½" x WOF strips for the binding.

Fabric C (6369-68 Tossed Cardinal on Branch – Multi), cut:

- (1) 3 ½" x WOF strip, sub-cut (6) 3 ½" squares.

Fabric D (1351-Burgundy Just Color! – Burgundy), cut:

- (3) 2" x WOF strips, sub-cut (56) 2" squares.

Fabric E (1351-Pigment White Just Color! – Pigment White), cut:

- (5) 2" x WOF strips, sub-cut (56) 2" x 3 ½" strips.

Fabric F (6362-96 String of Lights – Black), cut:

- (1) 3 ½" x WOF strip, sub-cut (8) 3 ½" squares.

Fabric G (6364-8 Tossed Packages – White), cut:

- (2) 6 ½" x WOF strips, sub-cut (8) 6 ½" squares.

Fabric H (6363-89 Tossed Characters – Multi), cut:

- (1) 6 ½" x WOF strip, sub-cut (2) 6 ½" x 12 ½" strips.
- (1) 6 ½" x WOF strip, sub-cut (4) 6 ½" squares.

Fabric I (6373-89 Border Stripe – Multi), cut:

- (2) 6" x 72" LOF strips.
- (2) 6" x 66" LOF strips.

Backing (6361-89 Packed Characters – Multi), cut:

- (2) 76" x WOF strips. Sew the strips together and trim to 70" x 76" to make the back.

Sewing

Sew using a $\frac{1}{4}$ " seam allowance with right sides together (RST) unless otherwise indicated. Always press towards the darker fabric while assembling, unless otherwise noted by the arrows.

Block Assembly

Note: The arrows in figures represent the fabric print direction. Pay attention to the fabric and unit orientations when assembling the various components.

1. Sew (1) 3" x 38 $\frac{1}{2}$ " Fabric B strip to each side of the 32 $\frac{1}{2}$ " x 38 $\frac{1}{2}$ " Fabric A rectangle. Sew (1) 3" x 37 $\frac{1}{2}$ " Fabric B strip to the top and to the bottom of the Fabric A rectangle to make the Center Block (Fig. 1). **Trim the block to measure 36 $\frac{1}{2}$ " x 42 $\frac{1}{2}$ ".**

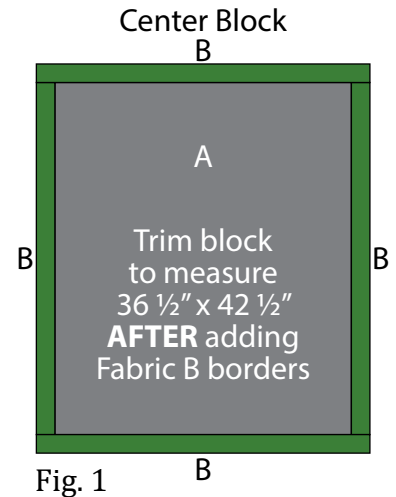


Fig. 1

2. Sew (1) 2" Fabric D square to each end of (1) 2" x 3 $\frac{1}{2}$ " Fabric E strip to make the top row. Repeat to make the bottom row. Sew (1) 2" x 3 $\frac{1}{2}$ " Fabric E strip to each side of (1) 3 $\frac{1}{2}$ " Fabric F square to make the middle row. Sew together the (3) rows lengthwise to make (1) 6 $\frac{1}{2}$ " Block One square (Fig. 2). Repeat to make (8) Block One squares total.

Block One
make 8

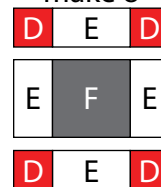


Fig. 2

Block Two
make 6

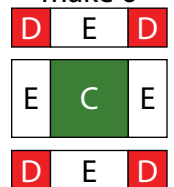


Fig. 3

3. Sew (1) 2" Fabric D square to each end of (1) 2" x 3 $\frac{1}{2}$ " Fabric E strip to make the top row. Repeat to make the bottom row. Sew (1) 2" x 3 $\frac{1}{2}$ " Fabric E strip to each side of (1) 3 $\frac{1}{2}$ " Fabric C square to make the middle row. Sew together the (3) rows lengthwise to make (1) 6 $\frac{1}{2}$ " Block Two square (Fig. 3). Repeat to make (6) Block Two squares total.

4. Sew together (1) 6 $\frac{1}{2}$ " Fabric G square, (1) Block One square, (1) 6 $\frac{1}{2}$ " Fabric H square, (1) Block Two square, (1) 6 $\frac{1}{2}$ " Fabric H square, (1) Block One square and (1) 6 $\frac{1}{2}$ " Fabric G square, in that order from top to bottom, to make (1) Side Border (Fig. 4). Repeat to make a second Side Border.

Side Border
make 2

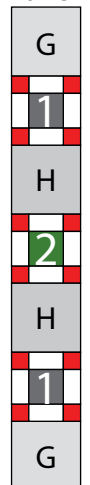


Fig. 4

5. Sew together (1) Block Two square, (1) 6 $\frac{1}{2}$ " Fabric G square, (1) Block One square, (1) 6 $\frac{1}{2}$ " x 12 $\frac{1}{2}$ " Fabric H strip, (1) Block One square, (1) 6 $\frac{1}{2}$ " Fabric G square and (1) Block Two square, in that order from left to right, to make the Top Border (Fig. 5). Repeat to make the Bottom Border.

Top/Bottom Border
make 2

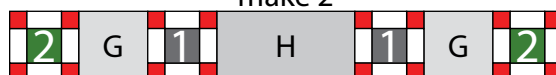


Fig. 5

Quilt Top Assembly

(Follow the Quilt Layout while assembling the quilt top.)

6. Sew (1) Side Border to each side of the Center Block.

7. Sew the Top Border and Bottom Border to the top and to the bottom of the Center Block.

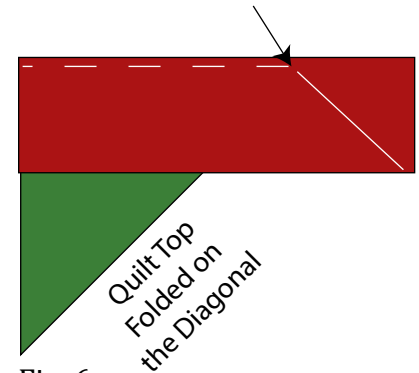
8. Sew (1) 2" x 54 1/2" Fabric B strip to each side of the Center Block. Sew (1) 2" x 51 1/2" Fabric B strip to the top and to the bottom of the Center Block.

9. Center (1) 6" x 72" Fabric I strip on (1) side of the Center Block and pin in place. Start sewing the strip a 1/4" from the top edge of the block and stop a 1/4" from the bottom edge.

DO NOT TRIM THE EXCESS. Repeat with the opposite side.

10. Repeat Step 9 to sew (1) 6" x 66" Fabric I strip to the top and to the bottom of the Center Block, making sure to stop and start 1/4" away from each end of the block. To miter each corner, fold the Center Block on a diagonal, wrong side together. This should line up the strips from adjacent sides (Fig. 6).

11. Starting at the sewn seam (represented by the arrow in Figure 6), draw a 45-degree line to the edge of the fabric. Sew on the drawn line. Trim the excess fabric leaving a 1/4" seam. Repeat this step with the remaining corners to make the quilt top.



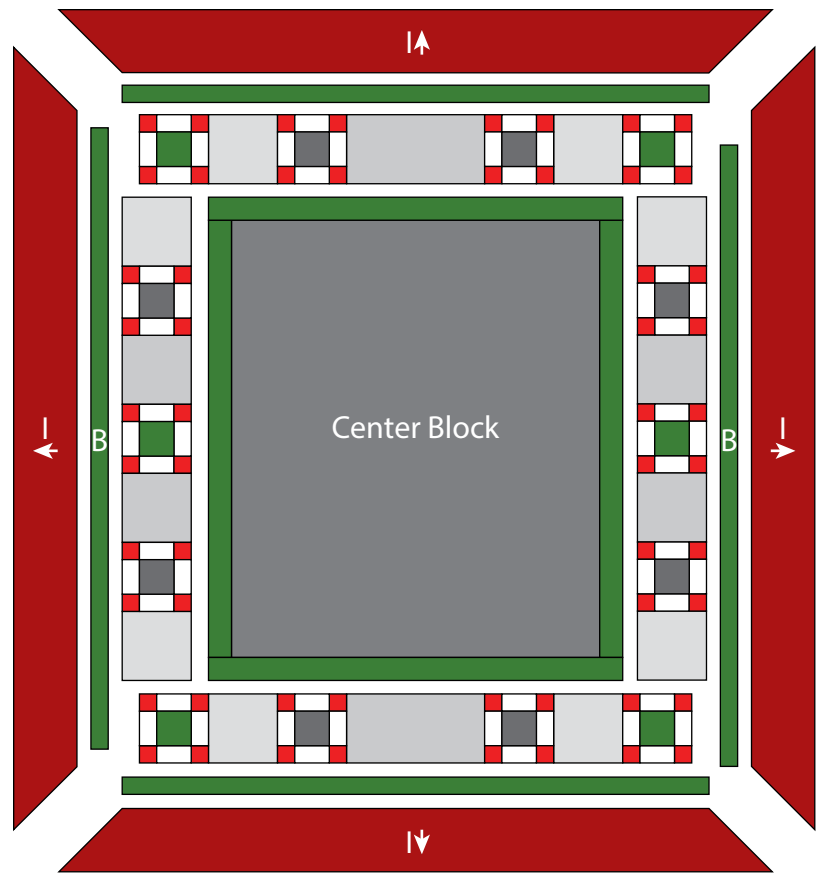
Layering, Quilting and Finishing

12. Press the quilt top and 70" x 76" backing well. Layer backing (wrong side up), batting, pressed quilt top (right side up) and baste. Quilt as desired and trim excess batting and backing when quilting is complete.

Binding

13. Cut the ends of the (7) Fabric B binding strips at a 45-degree angle and sew end to end to make (1) continuous piece of binding. Fold in half lengthwise and press wrong sides together.

14. Sew the binding to the front of the quilt, raw edges together. Turn the folded edge to the back, and hand stitch in place.



Quilt Layout

Every effort has been made to ensure that all projects are error free. All the information is presented in good faith, however no warranty can be given nor results guaranteed as we have no control over the execution of instructions. Therefore, we assume no responsibility for the use of this information or damages that may occur as a result. When errors are brought to our attention, we make every effort to correct and post a revision as soon as possible. Please make sure to check www.studioefabrics.net for pattern updates prior to starting the project. We also recommend that you test the project prior to cutting for kits. Finally, all free projects are intended to remain free to you and are not for resale.