

A Free Project Sheet
NOT FOR RESALE

Merry Town

QUILT 2



Featuring fabrics from the **Merry Town** collection by **Sharla Fults** for **STUDIO e fabrics**

Fabric Requirements

(A) 6361-89	¼ yard
(B) 6369-68	⅔ yard
(C) 6371-9	1 yard
(D) 6370-80	⅜ yard
(E) 6372-89	⅔ yard
(F) 6368-88	1 ⅛ yards*
(G) 6362-6	⅔ yard
(H) 6371-99	½ yard

(I) 6368-66	⅜ yard
(J) 6373-89	2 ¼ yards
Backing	
6365-8	3 ¾ yards

* Includes Binding
** Just Color! Collection

Additional Supplies Needed

Batting 66" x 81" (Recommended:
Air Lite® Colour Me 100% Cotton)
Piecing and sewing thread
Quilting and sewing supplies

Quilt designed by Heidi Pridemore
Finished Quilt Size 58" x 73"
Skill Level: Advanced Beginner

Please check our website for pattern updates before starting this project.

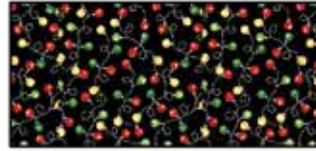
Fabrics in the Collection



Packed Characters
Multi - 6361-89



String of Lights
White - 6362-6



String of Lights
Black - 6362-96



Tossed Characters
Multi - 6363-89



Tossed Packages
White - 6364-8



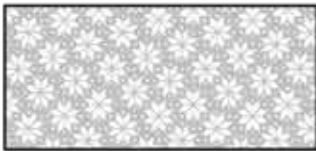
Tossed Snowman
White - 6365-8



Diagonal Stripe
Red - 6366-80



Set Flake
Red - 6367-80



Set Flake
Gray - 6367-90



Diagonal Plaid
Green - 6368-66



Diagonal Plaid
Red - 6368-88



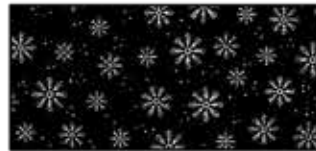
Tossed Cardinal on Branch
Multi - 6369-68



Tossed Candy Cane
Red - 6370-80



Tossed Snowflakes
Gray - 6371-9



Tossed Snowflakes
Black - 6371-99



Border Stripe
Multi - 6373-89



9.5in x 9.5 in Blocks
Multi - 6372-89



Panel 36in x 44in
Multi - 6374P-89

Select Fabrics from
Just Color!



Burgundy
1351-Burgundy



Pigment White
1351-Pigment White

Cutting

Cutting Instructions

Please note: All strips are cut across the width of fabric (WOF) from selvage to selvage edge unless otherwise noted.

WOF= Width of Fabric • LOF = Length of Fabric

Fabric A (6361-89 Packed Characters – Multi), cut:

- (1) 6 ½" x WOF strip, sub-cut (6) 6 ½" squares.

Fabric B (6369-68 Tossed Cardinal on Branch – Multi), cut:

- (3) 3 ⅞" x WOF strips, sub-cut (24) 3 ⅞" squares.
- (4) 2" x WOF strips, sub-cut (48) 2" x 3 ½" strips.

Fabric C (6371-9 Tossed Snowflakes – Gray), cut:

- (2) 5 ⅜" x WOF strips, sub-cut (12) 5 ⅜" squares.
- (3) 3 ⅞" x WOF strips, sub-cut (24) 3 ⅞" squares.
- (3) 2" x WOF strips, sub-cut (48) 2" squares.

Fabric D (6370-80 Tossed Candy Cane – Red), cut:

- (2) 5 ⅜" x WOF strips, sub-cut (12) 5 ⅜" squares.

Fabric E (6372-89 9.5in x 9.5in Blocks – Multi):

- Fussy cut (6) 10" squares, each centered on a block

Fabric F (6368-88 Diagonal Plaid – Red) cut:

- (3) 2 ½" x WOF strips, sub-cut (12) 2 ½" x 10" strips.
- (4) 2 ½" x WOF strips, sub-cut (12) 2 ½" x 14" strips.
- (7) 2 ½" x WOF strips for the binding.

Fabric G (6362-6 String of Lights – White), cut:

- (4) 2" x WOF strips, sub-cut (12) 2" x 12 ½" strips.
- (6) 2" x WOF strips, sub-cut (12) 2" x 15 ½" strips.

Fabric H (6371-99 Tossed Snowflakes – Black), cut:

- (3) 5" x WOF strips, sub-cut (24) 5" squares.

Fabric I (6368-66 Diagonal Plaid – Green), cut:

- (3) 1 ½" x WOF strips. Sew the strips together end to end with diagonal seams and cut (2) 1 ½" x 60 ½" strips.
- (3) 1 ½" x WOF strips. Sew the strips together end to end with diagonal seams and cut (2) 1 ½" x 47 ½" strips.

Fabric J (6373-89 Border Stripe – Multi), cut:

- (2) 6" x 77" LOF strips.
- (2) 6" x 62" LOF strips.

Backing (6365-8 Tossed Snowman – White), cut:

- (2) 66" x WOF strips. Sew the strips together and trim to 66" x 81" to make the back.

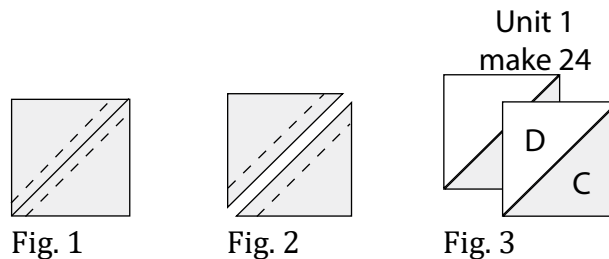
Sewing

Sew using a $\frac{1}{4}$ " seam allowance with right sides together (RST) unless otherwise indicated. Always press towards the darker fabric while assembling, unless otherwise noted by the arrows.

Block Assembly

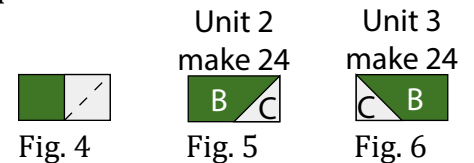
Note: The arrows in figures represent the fabric print direction. Pay attention to the fabric and unit orientations when assembling the various components.

1. Place (1) $5\frac{3}{8}$ " Fabric C square on top of (1) $5\frac{3}{8}$ " Fabric D square, right sides together. Draw a line across the diagonal of the top square (Fig. 1). Sew $\frac{1}{4}$ " away from each side of the drawn diagonal line (Fig. 1). Cut the (2) squares apart on the drawn diagonal line (Fig. 2) to make (2) half-square triangles. Trim the half-square triangles to measure 5" square to make (2) Unit 1 squares (Fig. 3). Repeat to make (24) Unit 1 squares total.

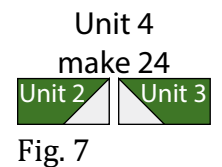


2. Place (1) 2" Fabric C square on the right side of (1) 2" x $3\frac{1}{2}$ " Fabric B strip, right sides together (Fig. 4). Sew across the diagonal of the square from the upper right corner to the lower left corner (Fig. 4). Flip open the triangle formed and press. Trim away the excess fabric from behind the triangle, leaving a $\frac{1}{4}$ " seam allowance to make (1) Unit 2 strip (Fig. 5). Repeat to make (24) Unit 2 strips total.

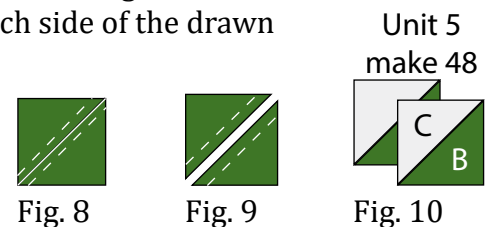
3. Repeat Step 2 and refer to Figure 6 for fabric identification, placement and seam direction to make (24) Unit 3 strips.



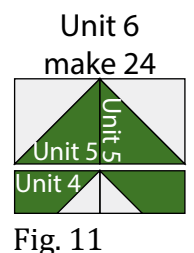
4. Sew (1) Unit 2 strip to the left end of (1) Unit 3 strip along the Fabric C sides to make (1) Unit 4 strip (Fig. 7). Repeat to make (24) Unit 4 strips total.



5. Place (1) $3\frac{7}{8}$ " Fabric B square on top of (1) $3\frac{7}{8}$ " Fabric C square, right sides together. Draw a line across the diagonal of the top square (Fig. 8). Sew $\frac{1}{4}$ " away from each side of the drawn diagonal line (Fig. 8). Cut the (2) squares apart on the drawn diagonal line (Fig. 9) to make (2) half-square triangles. Trim the half-square triangles to measure $3\frac{1}{2}$ " square to make (2) Unit 5 squares (Fig. 10). Repeat to make (48) Unit 5 squares total.



6. Sew together (2) Unit 5 squares along the Fabric B sides. Sew (1) Unit 4 strip to the bottom of the newly sewn strip lengthwise to make (1) 5" x $6\frac{1}{2}$ " Unit 6 rectangle (Fig. 11). Repeat to make (24) Unit 6 rectangles.



7. Sew (1) Unit 1 square to each side of (1) Unit 6 rectangle to make the top row. Repeat to make the bottom row. Sew (1) Unit 6 rectangle to each side (1) 6 1/2" Fabric A square to make the middle row. Sew together the (3) rows lengthwise to make (1) 15 1/2" Block One square (Fig. 12). Repeat to make (6) Block One squares total.

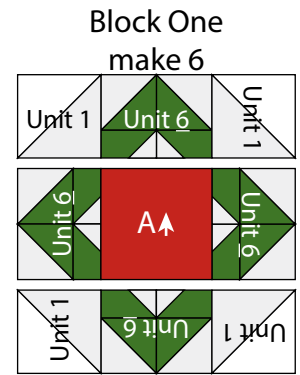


Fig. 12

8. Sew (1) 2 1/2" x 10" Fabric F strip to each side of (1) 10" Fabric E square. Sew (1) 2 1/2" x 14" Fabric F strip to the top and to the bottom of the Fabric E square. Trim the unit to measure 12 1/2" x 12 1/2" to make (1) Unit 7 square (Fig. 13). Repeat to make (6) Unit 7 squares total.

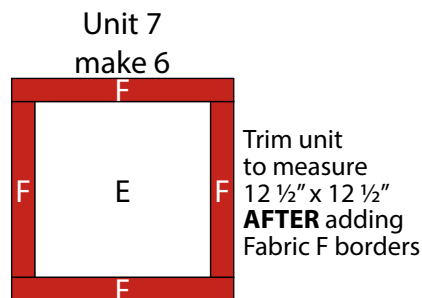


Fig. 13

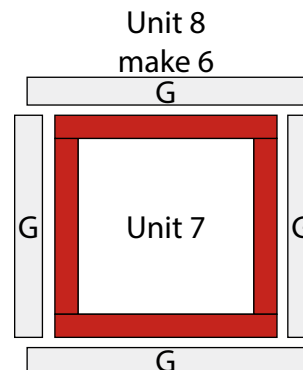


Fig. 14

10. Place (1) 5" Fabric H square on the top left corner of (1) Unit 8 square, right sides together (Fig. 15). Sew across the diagonal of the smaller square from the upper right corner to the lower left corner (Fig. 15). Flip open the triangle formed and press. Trim away the excess fabric from behind the triangle 1/4" away from the sewn seam (Fig. 16).

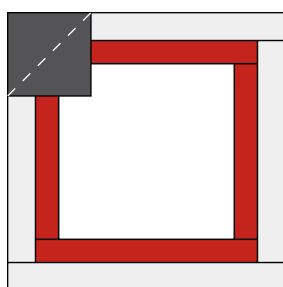


Fig. 15

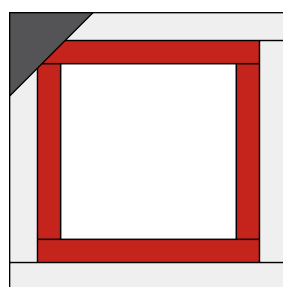


Fig. 16

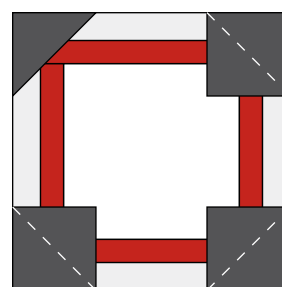


Fig. 17

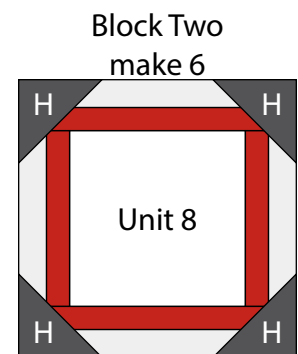


Fig. 18

11. Follow Figure 17 for the seam direction to add a 5" Fabric H square to each of the remaining corners of the Unit 8 square to make (1) 15 1/2" Block Two square (Fig. 18).

12. Repeat Steps 10-11 to make (6) Block Two squares total.

13. Sew (1) Block One square to each side of (1) Block Two square to make Row One (Fig. 19). Repeat to make Row Three.

14. Sew (1) Block Two square to each side of (1) Block One square to make Row Two (Fig. 19). Repeat to make Row Four.

15. Sew together the (4) Rows from Steps 13-14, lengthwise and in numerical order from top to bottom, to make the 45 ½" x 60 ½" Center Block (Fig. 19).

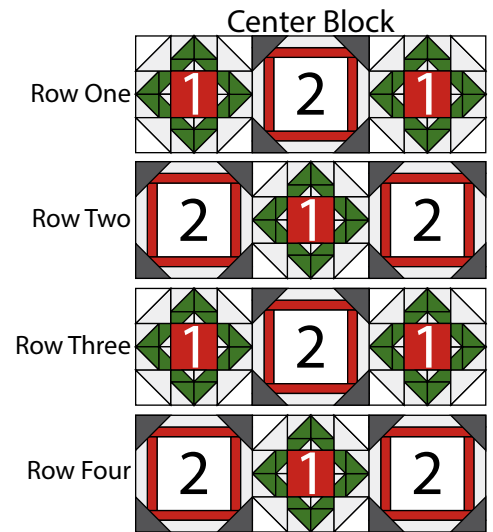


Fig. 19

Quilt Top Assembly

(Follow the Quilt Layout while assembling the quilt top.)

16. Sew (1) 1 ½" x 60 ½" Fabric I strip to each side of the Center Block. Sew (1) 1 ½" x 47 ½" Fabric I strip to the top and to the bottom of the Center Block.

17. Center (1) 6" x 77" Fabric J strip on (1) side of the Center Block and pin in place. Start sewing the strip a ¼" from the top edge of the block and stop a ¼" from the bottom edge. **DO NOT TRIM THE EXCESS.** Repeat with the opposite side.

18. Repeat Step 17 to sew (1) 6" x 62" Fabric J strip to the top and to the bottom of the Center Block, making sure to stop and start ¼" away from each end of the block. To miter each corner, fold the Center Block on a diagonal, wrong side together. This should line up the strips from adjacent sides (Fig. 20).

19. Starting at the sewn seam (represented by the arrow in Figure 20), draw a 45-degree line to the edge of the fabric. Sew on the drawn line. Trim the excess fabric leaving a ¼" seam. Repeat this step with the remaining corners to make the quilt top.

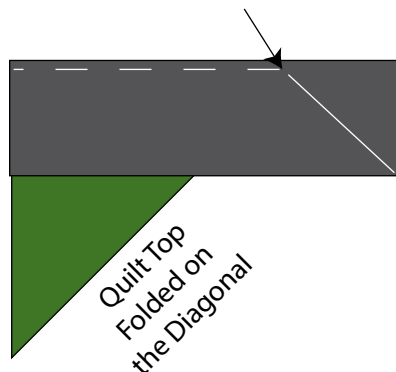


Fig. 20

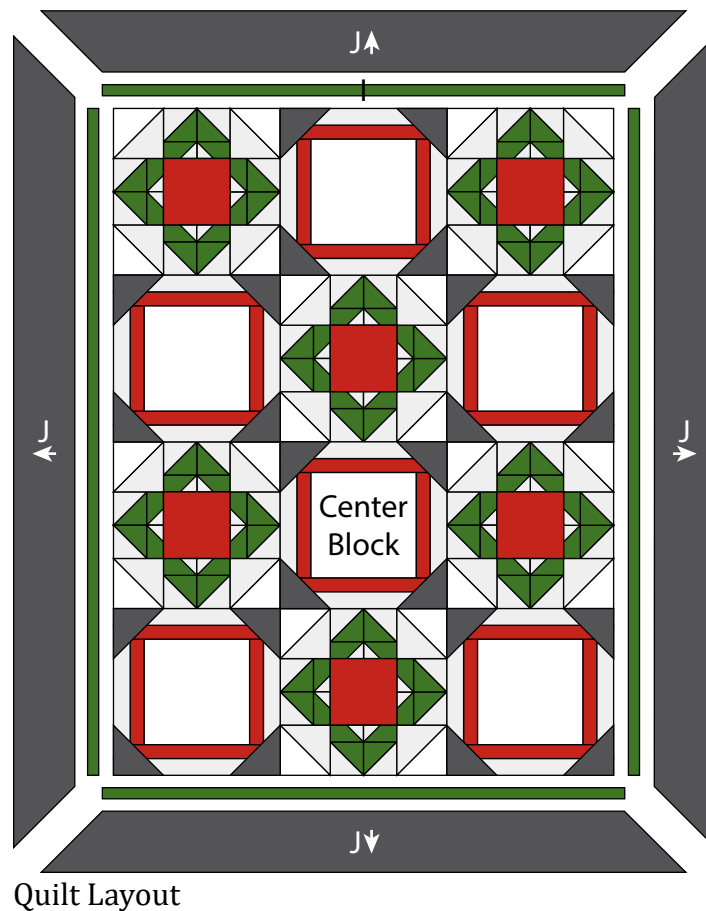
Layering, Quilting and Finishing

20. Press the quilt top and 66" x 81" backing well. Layer backing (wrong side up), batting, pressed quilt top (right side up) and baste. Quilt as desired and trim excess batting and backing when quilting is complete.

Binding

21. Cut the ends of the (7) Fabric F binding strips at a 45-degree angle and sew end to end to make (1) continuous piece of binding. Fold in half lengthwise and press wrong sides together.

22. Sew the binding to the front of the quilt, raw edges together. Turn the folded edge to the back, and hand stitch in place.



Quilt Layout

*Every effort has been made to ensure that all projects are error free. All the information is presented in good faith, however no warranty can be given nor results guaranteed as we have no control over the execution of instructions. Therefore, we assume no responsibility for the use of this information or damages that may occur as a result. When errors are brought to our attention, we make every effort to correct and post a revision as soon as possible. Please make sure to check www.studioefabrics.net for pattern updates prior to starting the project. We also recommend that you test the project prior to cutting for kits. Finally, all free projects are intended to remain free to you and are **not for resale**.*