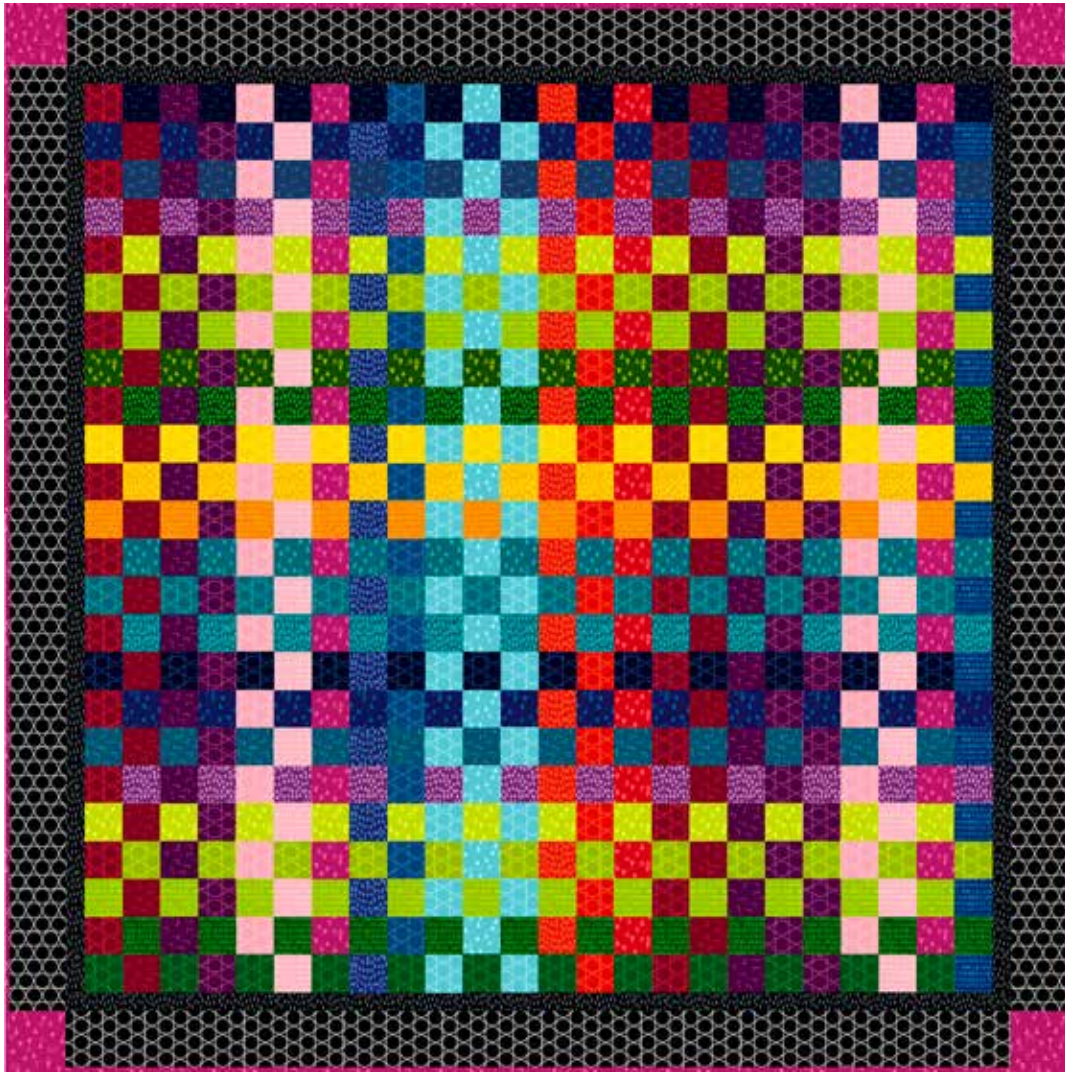


Modern Batiks

QUILT 1



Featuring fabrics from the **Modern Batiks** collection from **STUDIO·e·fabrics**

Fabric Requirements

- | | | |
|------------------------------|-----------------------------|-----------------------------|
| (1) 3760-79 1/8 yard | (14) 3763-66 1/8 yard | (27) 3763-88 1/8 yard |
| (2) 3764-71 1/4 yard | (15) 3761-44 1/8 yard | (28) 3761-88 1/8 yard |
| (3) 3760-77 1/8 yard | (16) 3762-33 1/8 yard | (29) 3764-88 1/8 yard |
| (4) 3763-64 1/4 yard | (17) 3761-47 1/8 yard | (30) 3761-16 1/4 yard |
| (5) 3762-63 1/4 yard | (18) 3761-79 1/8 yard | (31) 3763-16 1/8 yard |
| (6) 3764-67 1/8 yard | (19) 3760-74 1/8 yard | (32) 3761-71 1/8 yard |
| (7) 3764-43 1/8 yard | (20) 3761-67 1/8 yard | (33) 3764-99 1/3 yard |
| (8) 3763-47 1/8 yard | (21) 3761-22 1/4 yard | (34) 3761-90 2/3 yard |
| (9) 3764-47 1/8 yard | (22) 3761-57 1/3 yard | (35) 3763-77 1/4 yard |
| (10) 3764-25 1/4 yard | (23) 3762-22 1/4 yard | Backing |
| (11) 3761-63 1/4 yard | (24) 3760-57 1/4 yard | 3761-30 3 3/4 yards |
| (12) 3762-67 1/8 yard | (25) 3760-87 1/4 yard | |
| (13) 3763-25 3/4 yard* | (26) 3761-87 1/4 yard | |

* Includes Binding

Additional Supplies Needed

- Batting 64" x 64" (Recommended: Air Lite® Color Me 100% Cotton)
- Piecing and sewing thread
- Quilting and sewing supplies

Quilt designed by Megan Downer
 Finished Quilt Size 56" x 56"
 Skill Level: Advanced Beginner

Fabrics in the Collection



Dots - Purple
3760-57



Dots - Teal
3760-74



Dots - Navy
3760-77



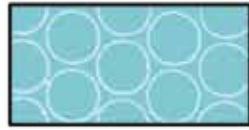
Dots - Dk. Blue
3760-79



Dots - Burgundy
3760-87



Dots - Black/White
3760-90



Circles - Lt. Blue
3761-16



Circles - Pink
3761-22



Circles - Linen
3761-30



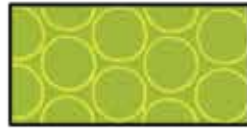
Circles - Lemon
3761-44



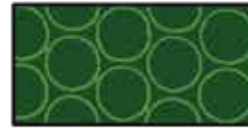
Circles - Peacock
3761-47



Circles - Purple
3761-57



Circles - Dk. Lime
3761-63



Circles - Dk. Green
3761-67



Circles - Royal
3761-71



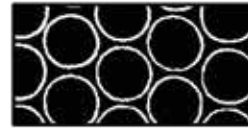
Circles - Dk. Blue
3761-79



Circles - Burgundy
3761-87



Circles - Red
3761-88



Circles - Black/White
3761-90



Pencil Dashes - Pink
3762-22



Pencil Dashes - Orange
3762-33



Pencil Dashes - Dk. Lime
3762-63



Pencil Dashes - Dk. Green
3762-67



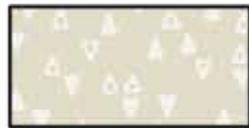
Pencil Dashes - Royal
3762-71



Triangles - Lt. Blue
3763-16



Triangles - Magenta
3763-25



Triangles - Linen
3763-30



Triangles - Peacock
3763-47



Triangles - Lt. Lime
3763-64



Triangles - Leaf Green
3763-66



Triangles - Navy
3763-77



Triangles - Red
3763-88



Triangles - Black/White
3763-90



Triangles - Lt. Gray
3763-92



Paint Dabs - Dk. Purple
3764-25



Paint Dabs - Linen
3764-30



Paint Dabs
Sunshine Yellow - 3764-43



Paint Dabs - Peacock
3764-47



Paint Dabs - Dk. Green
3764-67



Paint Dabs - Royal
3764-71



Paint Dabs - Red
3764-88



Paint Dabs - Charcoal
3764-99

Cutting

Cutting Instructions

Please note: All strips are cut across the width of fabric (WOF) from selvage to selvage edge unless otherwise noted.

WOF= Width of Fabric • LOF = Length of Fabric

Fabric 1 (3760-79 Dots – Dk. Blue), cut:

- (1) 2 ½" x WOF strip, sub-cut (12) 2 ½" squares.

Fabric 2 (3764-71 Paint Dabs – Royal), cut:

- (2) 2 ½" x WOF strips, sub-cut (24) 2 ½" squares.

Fabric 3 (3760-77 Dots – Navy), cut:

- (1) 2 ½" x WOF strip, sub-cut (12) 2 ½" squares.

Fabric 4 (3763-64 Triangles – Lt. Lime), cut:

- (2) 2 ½" x WOF strips, sub-cut (24) 2 ½" squares.

Fabric 5 (3762-63 Pencil Dashes – Dk. Lime), cut:

- (2) 2 ½" x WOF strips, sub-cut (24) 2 ½" squares.

Fabric 6 (3764-67 Paint Dabs – Dk. Green), cut:

- (1) 2 ½" x WOF strip, sub-cut (12) 2 ½" squares.

Fabric 7 (3764-43 Paint Dabs – Sunshine Yellow), cut:

- (1) 2 ½" x WOF strip, sub-cut (12) 2 ½" squares.

Fabric 8 (3763-47 Triangles – Peacock), cut:

- (1) 2 ½" x WOF strip, sub-cut (12) 2 ½" squares.

Fabric 9 (3764-47 Paint Dabs – Peacock), cut:

- (1) 2 ½" x WOF strip, sub-cut (12) 2 ½" squares.

Fabric 10 (3764-25 Paint Dabs – Dk. Purple), cut:

- (2) 2 ½" x WOF strips, sub-cut (24) 2 ½" squares.

Fabric 11 (3761-63 Circles – Dk. Lime), cut:

- (2) 2 ½" x WOF strips, sub-cut (24) 2 ½" squares.

Fabric 12 (3762-67 Pencil Dashes – Dk. Green), cut:

- (1) 2 ½" x WOF strip, sub-cut (12) 2 ½" squares.

Fabric 13 (3763-25 Triangles – Magenta), cut:

- (2) 2 ½" x WOF strips, sub-cut (24) 2 ½" squares.
- (1) 3 ½" x WOF strips, sub-cut (4) 3 ½" squares.
- (6) 2 ½" x WOF strips for the binding.

Fabric 14 (3763-66 Triangles – Leaf Green), cut:

- (1) 2 ½" x WOF strip, sub-cut (12) 2 ½" squares.

Fabric 15 (3761-44 Circles – Lemon), cut:

- (1) 2 ½" x WOF strip, sub-cut (12) 2 ½" squares.

Cutting - Continued

Fabric 16 (3762-33 Pencil Dashes – Orange), cut:

- (1) 2 ½" x WOF strip, sub-cut (12) 2 ½" squares.

Fabric 17 (3761-47 Circles – Peacock), cut:

- (1) 2 ½" x WOF strip, sub-cut (12) 2 ½" squares.

Fabric 18 (3761-79 Circles – Dk. Blue), cut:

- (1) 2 ½" x WOF strip, sub-cut (12) 2 ½" squares.

Fabric 19 (3760-74 Dots – Teal), cut:

- (1) 2 ½" x WOF strip, sub-cut (12) 2 ½" squares.

Fabric 20 (3761-67 Circles – Dk. Green), cut:

- (1) 2 ½" x WOF strip, sub-cut (12) 2 ½" squares.

Fabric 21 (3761-22 Circles – Pink), cut:

- (2) 2 ½" x WOF strips, sub-cut (24) 2 ½" squares.

Fabric 22 (3761-57 Circles – Purple), cut:

- (3) 2 ½" x WOF strips, sub-cut (36) 2 ½" squares.

Fabric 23 (3762-22 Pencil Dashes – Pink), cut:

- (2) 2 ½" x WOF strips, sub-cut (24) 2 ½" squares.

Fabric 24 (3760-57 Dots – Purple), cut:

- (2) 2 ½" x WOF strips, sub-cut (24) 2 ½" squares.

Fabric 25 (3760-87 Dots – Burgundy), cut:

- (2) 2 ½" x WOF strips, sub-cut (24) 2 ½" squares.

Fabric 26 (3761-87 Circles – Burgundy), cut:

- (2) 2 ½" x WOF strips, sub-cut (24) 2 ½" squares.

Fabric 27 (3763-88 Triangles – Red), cut:

- (1) 2 ½" x WOF strip, sub-cut (12) 2 ½" squares.

Fabric 28 (3761-88 Circles – Red), cut:

- (1) 2 ½" x WOF strip, sub-cut (12) 2 ½" squares.

Fabric 29 (3764-88 Paint Dabs – Red), cut:

- (1) 2 ½" x WOF strip, sub-cut (12) 2 ½" squares.

Fabric 30 (3761-16 Circles – Lt. Blue), cut:

- (2) 2 ½" x WOF strips, sub-cut (24) 2 ½" squares.

Fabric 31 (3763-16 Triangles – Lt. Blue), cut:

- (1) 2 ½" x WOF strip, sub-cut (12) 2 ½" squares.

Fabric 32 (3761-71 Circles – Royal), cut:

- (1) 2 ½" x WOF strip, sub-cut (12) 2 ½" squares.

Fabric 33 (3764-99 Paint Dabs – Charcoal), cut:

- (5) 1 ½" x WOF strips. Sew the strips together end to end with diagonal seams and cut (2) 1 ½" x 50 ½" strips and (2) 1 ½" x 48 ½" strips.

Cutting - Continued

Fabric 34 (3761-90 Circles – Black/White), cut:

- (5) 3 ½" x WOF strips. Sew the strips together end to end with diagonal seams and cut (4) 3 ½" x 50 ½" strips.

Fabric 35 (3763-77 Triangles – Navy), cut:

- (2) 2 ½" x WOF strips, sub-cut (24) 2 ½" squares.

Backing (3761-30 Circles - Linen), cut:

- (2) 64" x WOF strips. Sew the strips together and trim to 64" x 64" for the back.

Sewing

Sew using a ¼" seam allowance with right sides together (RST) unless otherwise indicated. Always press towards the darker fabric while assembling, unless otherwise noted by the arrows.

Quilt Top Assembly

(Follow the Quilt Layout while assembling the quilt top.)

1. Refer to Figure 1 on Page 5 for fabric designations and sew together (24) assorted 2 ½" squares to make (1) Row One. Repeat to make Row Two through Row Twenty-Four.
2. Sew the rows together lengthwise, in numerical order, to make the Center Block.
3. Sew (1) 1 ½" x 48 ½" Fabric 33 strip to each side of the Center Block. Sew (1) 1 ½" x 50 ½" Fabric 33 strip to the top and to the bottom of the Center Block.
4. Sew (1) 3 ½" x 50 ½" Fabric 34 strip to each side of the Center Block.
5. Sew (1) 3 ½" Fabric 13 square to each end of (1) 3 ½" x 50 ½" Fabric 34 strip to make (1) Top Border. Repeat to make (1) Bottom Border. Sew the Borders to the Center Block to make the quilt top.

Layering, Quilting and Finishing

6. Press the quilt top and 64" x 64" backing well. Layer backing (wrong side up), batting, pressed quilt top (right side up) and baste. Quilt as desired and trim excess batting and backing when quilting is complete.

Binding

7. Cut the ends of the (6) Fabric 13 binding strips at a 45-degree angle and sew end to end to make (1) continuous piece of binding. Fold in half lengthwise and press wrong sides together.
8. Sew the binding to the front of the quilt, raw edges together. Turn the folded edge to the back, and hand stitch in place.

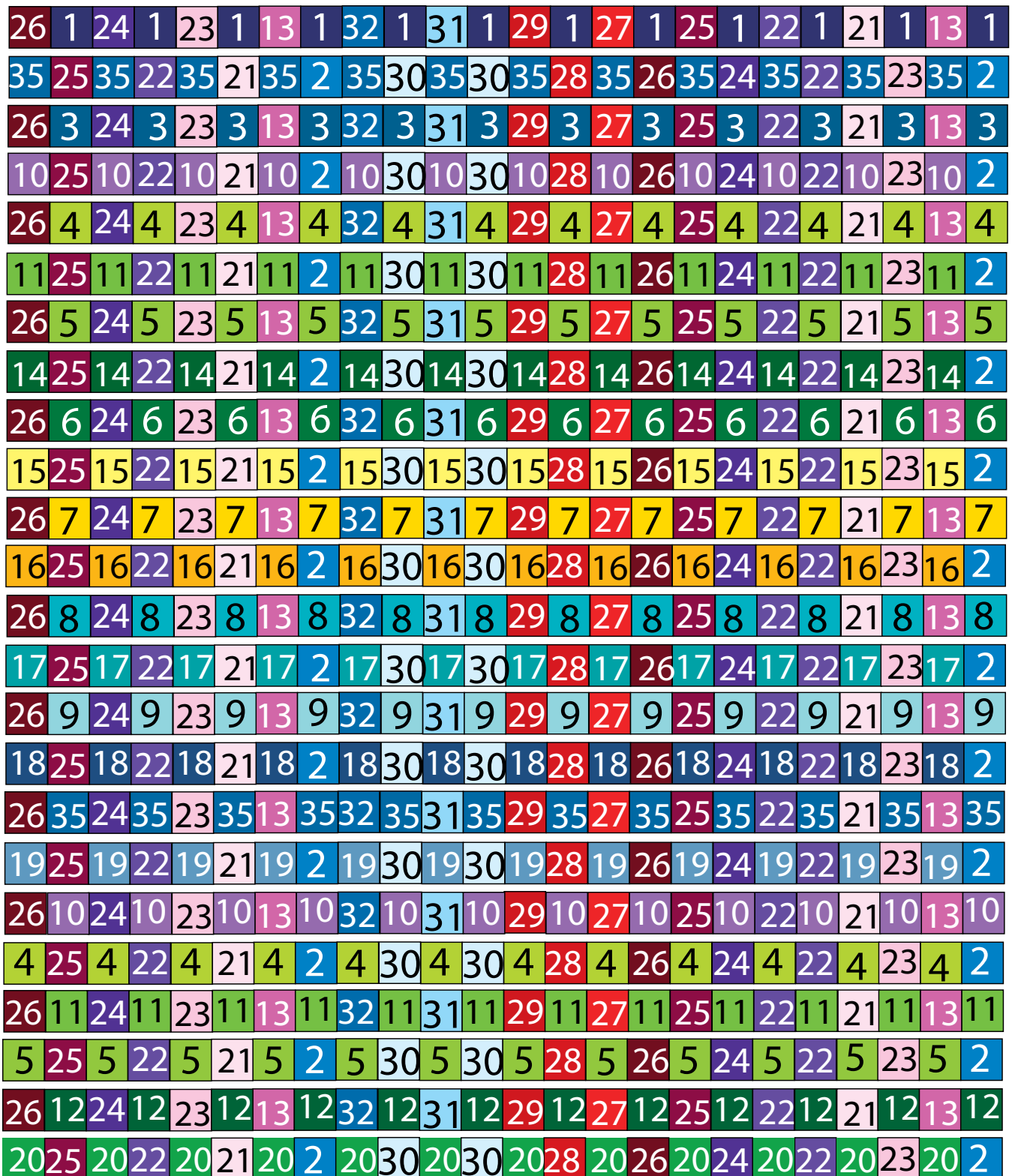
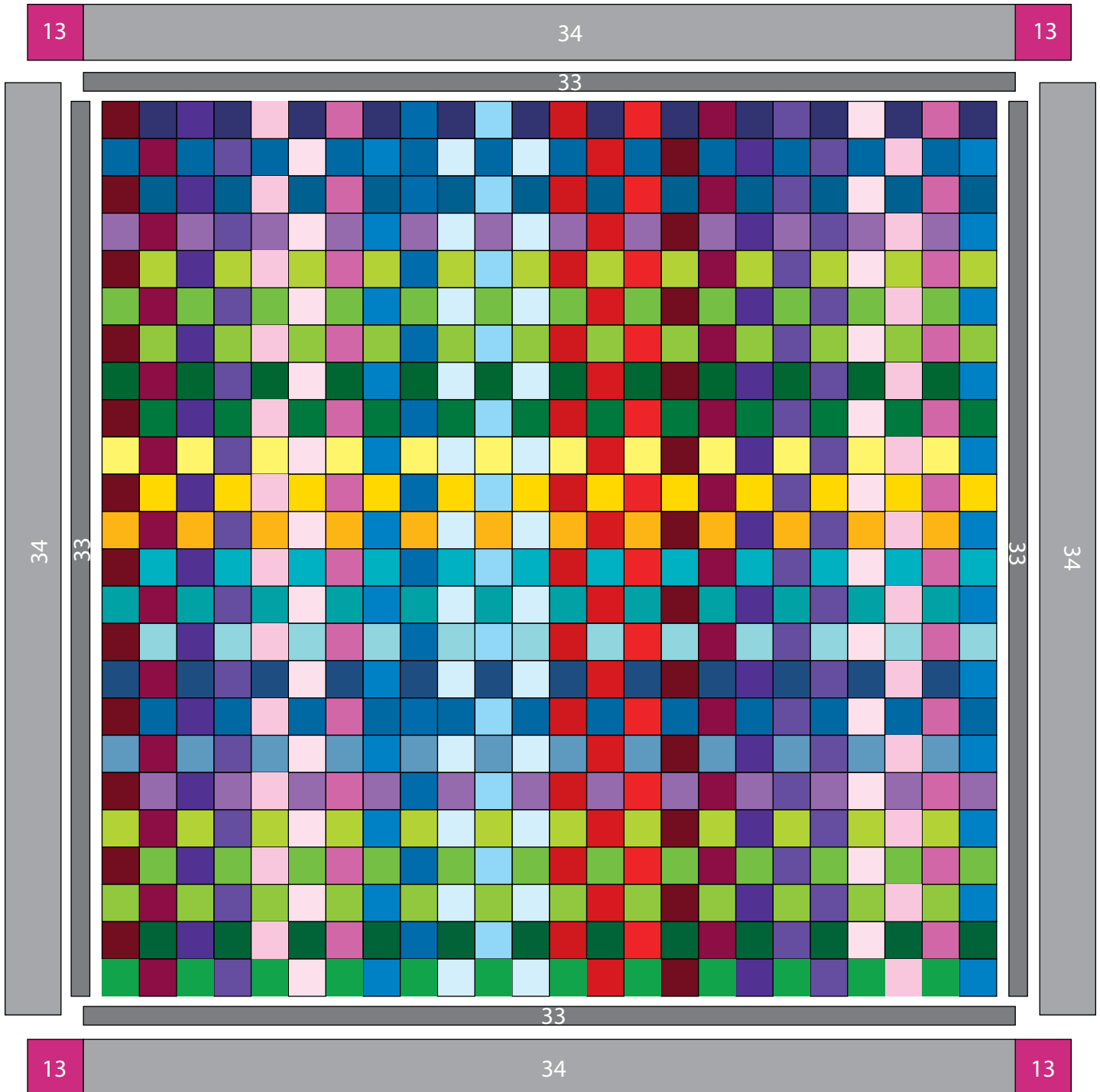


Fig. 1



Quilt Layout

Every effort has been made to ensure that all projects are error free. All the information is presented in good faith, however no warranty can be given nor results guaranteed as we have no control over the execution of instructions. Therefore, we assume no responsibility for the use of this information or damages that may occur as a result. When errors are brought to our attention, we make every effort to correct and post a revision as soon as possible. Please make sure to check www.studioefabrics.com for pattern updates prior to starting the project. We also recommend that you test the project prior to cutting for kits. Finally, all free projects are intended to remain free to you and are **not for resale**.